



1.1 MISSION MOMENT

Adult Brain Injury Program - The Adult Brain Injury (ABI) Program is funded through the Department of Health and Senior Services. The ABI Program provides assistance in locating, coordinating, and purchasing rehabilitation and psychological services for individuals who have survived a traumatic brain injury (TBI). The ABI Program provides two primary services: service coordination and rehabilitation services. To learn more visit:

<https://health.mo.gov/living/families/shcn/ahi.php>

1.2 PROGRESS TOWARD STRATEGIC GOALS

- 2023 Strategic Plan – Three members of the Board of Trustees (Tim Pigg, Dennis Diehl and Tammy Stidem) and the Administrative Leadership Team at JCHD participated in a joint strategic planning session with La Piana Consulting on June 27, 2023 at the Hillsboro Civic Center. Multiple strategy sessions have been scheduled throughout the process and work is on track to complete by end of third quarter.
- Trustee Community Town Hall Meetings – Three members of the Board of Trustees (Tim Pigg, Dennis Diehl and Tammy Stidem) participated in the first town hall meeting of 2023 on June 15th at the Hillsboro Civic Center. Five members of the public spoke at the event.
- Agency Visibility and Transparency – Several strategies have been implemented to increase visibility of JCHD services and accountability to our community. Activities include posting approved board reports and minutes on JCHD website, including a written Director's Report to update the Board and residents regarding progress toward agency goals, challenges or community updates impacting JCHD, fiduciary and program audits and report findings, presentations by agency division managers regarding monthly program activities, promotion of the JCHD mobile app, and continued support of live-streamed Board of Trustee meetings, among many other strategies.

1.3 CURRENT CHALLENGES OR COMMUNITY UPDATES IMPACTING JCHD

- **Internal**
 - Multiple key staff openings to include Environmental Supervisor, Environmental Public Health Specialist, (2) Public Health Nurses, Registered Medical Assistant, Expanded Function Dental Assistant and IT Support Specialist are impacting ability to provide essential services.
 - Increased local competition for specialty staff have impacted recruiting and retention efforts for core programs. A workforce compensation study is planned in the next quarter as one of multiple strategies to strengthen employee retention.

- The Mobile Wellness Unit was involved in a vehicle incident last month that has temporarily put the vehicle out of service. *Mobile Wellness Services continue to be provided* through the use of our multiple response vans with minimal impact to operations. The necessary repairs, in addition to the aging components of the unit have prompted funding efforts to support a new unit.
- **External**
 - Compass Health Network merged with Comtrema effective July 1, 2023. Compass is a Federally Qualified Health Center and Community Mental Health Center, providing both primary care and behavioral health. Director Vollmar and Chair Tim Pigg plan to set a meeting with Compass Director Tim Swinford to investigate opportunities for partnership to enhance service coordination across our county.
 - Missouri Department of Health and Senior Services adopts the *Foundation Public Health Service Model* for the state. The model describes foundational programs and capabilities that must be available to every Missouri resident and in every community to assure the best opportunity for health. More information can be found in the attached article from *Missouri Medicine*.

1.4 STATUTORY AND REGULATORY COMPLIANCE UPDATES

- **Missouri Institute for Community Health Accreditation** – JCHD received provisional accreditation from the MICH Board on June 27, 2023. Full accreditation will be awarded upon completion of the JCHD Community Health Improvement Plan (CHIP) to be submitted at the end of July. The JCHD CHIP was developed in collaboration with Mercy Jefferson, Jefferson County Community Partnership, COMTREA and the Jefferson Franklin Community Action Agency.
- **Program Audit: JCHD's [Show Me Healthy Women/Wise Woman Program](#)** received a program quality review on 06/23/23 with no areas of concern identified. The full summary report is attached to the end of this report. Quality Assurance Monitoring Results included:
 - In the **Eligibility** Section,
 - **Proof of Age:** criteria met with 100% compliance
 - **Proof of Income** documentation: criteria met with 100% compliance
 - **Eligibility form signed:** criteria met with 100% compliance.
 - **History form updated annually:** criteria met with 100% compliance.
 - In the **Screening & Reports** Section: all criteria were met with 100% compliance including: physical exams = submitted information, mammograms scheduled if eligible, clients with disease level blood pressure (>140/90) received referrals for medical follow-up, WW lab results equal submitted results, and client notified of SMHW test results.
 - In the **Follow up** Section: Criteria were met with 100% compliance including: documentation that client notified of WW screening/risk factor results in writing and verbally and abnormal and alert results for SMHW/WW received appropriate follow-up and referral.
 - In the **Billing-Reporting** Section: criteria were met with 100% compliance including: procedures and results submitted to SMHW via MOHSAIC were equal to chart information.

1.5 PUBLIC RELATIONS

- **City of St. Louis Department of Health Behavioral Health Bureau Phase II Announcement, June 13, 2023**
- **Jefferson County Legislative Forum, June 22, 2023**, Jefferson College, Hillsboro Campus.
- **Hillsboro Rotary Club Meetings**

1.6 PUBLIC HEALTH SECTOR NEWS

- **EPA has extended the public comment period to submit comments on EPA's Proposed Plan to address lead and other heavy metals in private, domestic drinking water wells** at residential properties, including childcare facilities, at the Southwest Jefferson County Mining NPL Superfund Site, which includes all of Jefferson County. Public comments will now be accepted until Friday, Aug. 4, 2023. Public comments will now be accepted for 45 days from Tuesday, June 20, through Friday, Aug. 4, 2023. Please mail or email any comments to Kramer.elizabeth@epa.gov by the final extension deadline of Friday, August 4th.
 - Public Notice: <https://www.epa.gov/mo/southwest-jefferson-county-mining-national-priorities-list-npl-superfund-site-jefferson-county-3>
 - For more information and a Fact Sheet with maps, visit: <https://www.epa.gov/mo/southwest-jefferson-county-mining-national-priorities-list-npl-superfund-site-jefferson-county-4>

1.7 ITEMS OF INFORMATION:

- Director Vollmar elected Co-Chair, *Missouri Coalition for Oral Health*
- Director Vollmar elected Chair, *Washington University Institute of Clinical and Translational Sciences* and *Institute for Public Health Community Advisory Board*
- Director Vollmar and Brianne Zwiener, Health Communications Manager, appointed to serve on the Merger Committee and Member Communications Subcommittee for *Missouri Public Health Association* and *Missouri Association of Local Public Health Agencies*. The two statewide public health professional organizations are merging into one association.
- Director Vollmar provided testimony at a June 21, 2023 deposition related to the Prescription Opioid lawsuit. Jillian Bissell and Jaclyn Brown previously provided testimony on behalf of the County of Jefferson.

1.8 RECOGNITION AND OPPORTUNITIES FOR BOARD ENGAGEMENT

- Fifth Annual Jefferson County Rotary Clubs Benefit Golf Tournament, Friday, October 13, 2023 at Crystal Highlands Golf Club. We are looking for sponsors, teams and silent auction baskets. For more information visit: www.jeffcorotary.org. Proceeds support low cost and no cost healthcare services from JCHD's Mobile Wellness Team.
- Special Thanks to the JCHD PERKS Committee for planning and implementing a fantastic staff team building event on June 8th at the Axe House in Valley Park.

1.9 ATTACHMENTS:

- *2023-07-07 EPA Region 7 Seeks Public Input on Proposed Plan for Southwest Jefferson County Mining Superfund Site during July 11 Public Meeting Final* press release
- **Senior Farmers Market Nutrition Program:** The Missouri Senior Farmers Market Nutrition Program (MoSFMNP) provides benefits to low-income seniors (60 years of age or older) residing in Jefferson County. Eligible seniors receive \$50 in benefits annually. Benefits can be exchanged for eligible foods at a farmers market or roadside stand with an authorized farmer. For more information see attached flyer or visit:
<https://agriculture.mo.gov/abd/fmkt/>

**Missouri Department of Health & Senior Services
Section for Women's Health
Show Me Healthy Women (SMHW)**

Provider: Jefferson County Health Dept.

Visit Date: 06/23/2023

An on-site record review took place at Jefferson County Health Department in Arnold and monitoring results were discussed with Lisa Rhodes. The health department tracks and verifies professional licensure of clinical staff. A nurse practitioner license and a physician/surgeon license were viewed and verified as current. Jefferson County meets all monitoring criteria standards for the SMHW program.

Areas Needing Correction:

There were no areas of concern requiring a Plan of Correction.

Recommendations:

The Jefferson County Health Department has established a solid structure for providing breast and cervical cancer screening services through SMHW as revealed in the following QA monitoring results.

QA monitoring results:

- In the **Eligibility** Section,
 - **Proof of Age:** criteria met with 100% compliance
 - **Proof of Income** documentation: criteria met with 100% compliance
 - **Eligibility form signed:** criteria met with 100% compliance.
 - **History form updated annually:** criteria met with 100% compliance.
- In the **Screening & Reports** Section: all criteria were met with 100% compliance including: physical exams = submitted information, mammograms scheduled if eligible, clients with disease level blood pressure (>140/90) received referrals for medical follow-up, WW lab results equal submitted results, and client notified of SMHW test results.
- In the **Follow up** Section: Criteria were met with 100% compliance including: documentation that client notified of WW screening/risk factor results in writing and verbally and abnormal and alert results for SMHW/WW received appropriate follow-up and referral.
- In the **Billing-Reporting** Section: criteria were met with 100% compliance including: procedures and results submitted to SMHW via MOHSAIC were equal to chart information.

Recommendation

Patient navigation, a term used by the CDC's National Breast and Cervical Cancer Early Detection Program (NBCCEDP), is an individualized intervention providing patients who have never been screened or not screened within the last 3-5 years, (females 50-64 years of age for breast cancer screening and females 35-64 years of age for CBE and cervical cancer screening), assistance to obtain screening services.

**Missouri Department of Health & Senior Services
Section for Women's Health
Show Me Healthy Women (SMHW)**

Based on the aforementioned definition, your clinic is correct in not billing the SMHW for patient navigation services. In the event a client meets the definition, whether enrolled in the SMHW program or not, Jefferson County Health Department (JCHD) can submit for payment once a screening is completed.

The client's decision to utilize particular assistance offered by JCHD is their choice, however if patient navigation is delivered consistently with CDC policy, the woman meets age and income requirements, and the patient completes the screening/diagnostics then navigation services can be reimbursed. (See Provider Manual page 12.1-12.2)

Thank you for your work and dedication in serving women through the Show Me Healthy Women program!

Your next QA monitoring visit will be in approximately two years.

Margaret L. Laycock RN MSN
Regional Program Coordinator
SMHW/WW



MISSOURI DEPARTMENT OF
**HEALTH &
SENIOR SERVICES**

Missouri's Public Health at a Glance

by Paula F. Nickelson, MEd

The public health and healthcare systems must continue to identify methods to address the complex, inter-related factors inclusive of social determinants of health, which impact health outcomes for our neighbors and citizens.

Missouri Department of Health and Senior Services (DHSS) is honored to contribute to *Missouri Medicine* to provide an overview of the 'state of the state's health,' as well as insights into current and anticipated initiatives to improve the health and safety of our citizens. One of the many lessons reinforced by the COVID-19 pandemic was that quality public health data should be used to drive decision-making—whether at the state official level or the individual resident level. While we begin 2023 with room to improve several of our state's public health indicators we are encouraged by upcoming opportunities and engaged partners who are as dedicated as DHSS to changing our trajectory and making a healthier Missouri.



Paula F. Nickelson, Acting Director, Missouri Department of Health and Senior Services.

Life Expectancy in Missouri: Trends

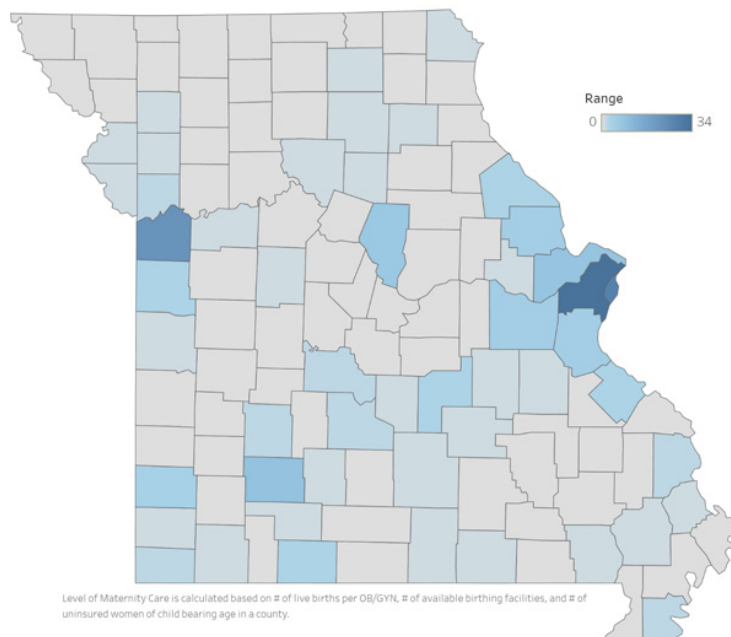
Life expectancy dropped precipitously in Missouri between 2019 and 2021, mirroring national trends. COVID-19-related deaths, record high opioid overdose deaths, homicides and suicides all contributed to this significant decline. Missouri's life expectancy is 74.6, the lowest calculated in about 40 years. Nationally, life expectancy declined by a similar margin dropping from 78.8 in 2019 to 76.1 in 2021. In recent years, Missouri life expectancy has consistently been about 1.5 years less than the national average and is currently over five years less than Hawaii, which has the longest life expectancy at birth according to the CDC.

Leading Causes of Mortality in Missouri

The impact of the COVID-19 pandemic was apparent in vital statistics collected in 2020 and 2021. COVID-19 was the third-leading cause of death in Missouri for both years following behind heart disease and cancer, which have been the longstanding top two causes of death. COVID-19 death counts were higher than unintentional injuries, chronic lower respiratory diseases and stroke (which ranked fourth through sixth respectively). The total number of Missouri resident deaths increased from 62,155 in 2019 to 73,883 in 2020, an unprecedented increase of almost 19%. The previous highest year-to-year increase was a full century

Pregnancy-Associated Mortality Review Dashboard 2017-2019

Pregnancy-Associated Death: County of Residence
This map will only display count data for all Pregnancy-Associated deaths.



earlier in 1919 during the Spanish flu pandemic, which resulted in an increase of 13.3%.

Violent deaths affect younger populations at higher rates and have been increasing in Missouri in recent years, an upward trend since 2015. In 2021, the number of homicides decreased by 11%. While a decrease, this rate is still higher than all annual rates experienced from 1999-2019. Suicides experienced a 64% increase in Missouri between 2003 and 2016 but counts have remained relatively stable from 2016-2021.

Maternal Mortality in Missouri

Missouri also experiences high rates of maternal mortality with the 12th highest rate in the United States. Missouri published the first interactive maternal mortality dashboard in the nation, available online at health.mo.gov/data/pamr.

There are multiple policy and programmatic recommendations that the DHSS and partners will be pursuing. They are contained in the “Multi-Year Look at Maternal Mortality in Missouri: 2017-2019

Pregnancy-Associated Mortality Review Annual Report” and are targeted at reducing these tragic statistics.

Obesity: Underlying Factor in Chronic Disease

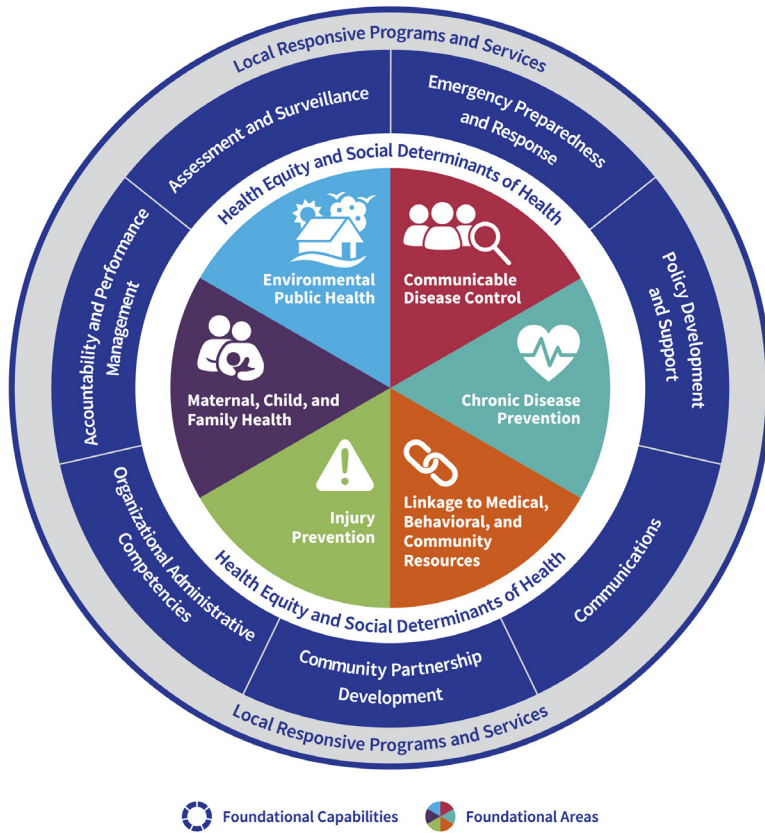
Obesity is one of the fastest growing chronic diseases in the U.S. and is unique in that it is a primary risk factor for virtually all other chronic diseases, including but not limited to diabetes, cardio- and cerebro-vascular diseases, chronic kidney disease and multiple cancers. According to the 2021 Behavioral Risk Factor Surveillance Survey, with an obesity prevalence rate of 37.2% in adults, Missouri continues to outpace the national average of 33.9%. This number jumps to 69.2% when including individuals who are categorized as overweight.

Missouri’s Public Health System Under-Resourced: What’s Next?

Missouri’s public health system has been under-resourced for decades and this must change in order for Missourians’ health to improve. With leadership by DHSS, the state’s governmental public health system is adopting a new model. The model describes foundational programs and capabilities that must be available to every Missouri resident and in every community to assure the best opportunity for health.

The model described at <https://www.healthiermo.org/>—the Foundational Public Health Services (FPHS)—aims to assure six core public health programmatic areas are available through every public health agency: chronic disease prevention, communicable disease control, environmental public health,; injury prevention, maternal, child and family health, and linkages to medical, behavioral, and community resources.

With funding from the Centers for Disease Control and Prevention (CDC), DHSS will lead an effort over the next four to five years to conduct a cost analysis for full implementation of the FPHS model statewide, as well as an accountability measure planning effort with a diverse group of stakeholders inclusive of county and state policymakers.



The state and each county are authorized to receive funding through the opioid settlement, although the funding has been slow to become available for implementation. Planning at the state level for these funds include naloxone distribution, expansion of a statewide Perinatal Quality Collaborative designed to identify methods for practitioners and communities to assure good outcomes for babies born to mothers using opioids, and expansion of Medication Assisted Therapies and other outpatient services for opioid users.

DHSS and Missouri Department of Mental Health approached the CDC and the Substance Abuse and Mental Health Services Administration to co-facilitate a statewide convening to plan for the prevention, treatment and recovery of individuals using and abusing opioids. These meetings occurred in November and December 2022 with a comprehensive, statewide plan forthcoming.

Missouri's Public Health and Healthcare Workforce

Missouri and the entire nation face an unprecedented challenge with the public health and healthcare workforce, across all titles and professional, paraprofessional, support levels, in all areas of the state. Efforts are underway to address these workforce issues, but resolution will take decades and require innovation.

DHSS and the Missouri Division of Workforce Development will co-lead a newly formed Public Health/Healthcare Workforce Commission to continue to address the workforce challenges.

Opioid Misuse, the Impact, and Next Steps

Unintentional injury deaths increased by 48% between 2011 and 2021, by far the largest increase among the top five leading causes of death over this period. Accidental drug overdose, a sub-category of unintentional injury, is the largest driver of this increase.

Non-Medical Marijuana Use for Adults: Implementation

With the November 2022 passage of the petition ballot initiative, Missouri became one of twenty-one states allowing non-medical marijuana use for adults. Missouri legalized medical marijuana use four years ago, now one of thirty-seven states to do so. DHSS is responsible to develop, implement, and oversee both medical and adult non-medical use in the state. Further information and updates are available at cannabis.mo.gov.

COVID and ARPA Funding

DHSS is grateful for the American Rescue and Preparedness Act (ARPA) funds, which the Governor and General Assembly dedicated to the expansion of the Missouri State Public Health Laboratory – an integrated approach to

laboratory needs of the Missouri Departments of Health and Senior Services, Agriculture, Conservation, Natural Resources, and Public Health. This represents the first state laboratory in the nation to house scientists interested in the human, animal, and environmental issues and the impact of that intersection to the health of all three. We are excited to lead the way in this effort and look forward to benefits not yet totally foreseen.

DHSS published a public-facing, interactive dashboard in early 2023 allowing community members, policy makers, and stakeholders to understand how the public health COVID-19 funds have been used in their communities and for the betterment of public health and healthcare across the state. To view our success stories at health.mo.gov/funding.

Master Plan on Aging

By 2030, Missouri seniors will comprise more than 25% of Missouri's population—for the first time there will be more older adults than individuals younger than 18 years of age. In 2023, the state will launch planning for a Cabinet-level Master Plan on Aging under leadership from the Governor's Office and DHSS to chart the path forward for public and private investments and initiatives across all disciplines and fields to proactively plan for our aging residents.

DHSS Board of Health

DHSS thanks the members of the State Board of Health for their leadership. Those members include: Sue Allen, Town and Country; Matthew Brandt, MD, Springfield; Jeffrey Coughenour, MD, Columbia; Nick Ragone, St. Louis; and Debra Ann Schumer, Cape Girardeau.



DHSS Chief Medical Officer

Heidi Miller, MD, an internal medicine physician with extensive experience with uninsured, Medicaid and

underinsured populations, joined DHSS as the department's first Chief Medical Officer in January 2023. Dr. Miller will provide medical guidance and expertise to DHSS programs, serve as the liaison with medical associations and providers, be instrumental in program and protocol development, and continue to build and implement the vision of an integrated public health and healthcare system.

Forward Together

While many of Missouri's health indicators are not encouraging, there are actionable improvements, which Missourians can and must make starting with investments in our public health system and our public health/healthcare workforce. The public health and healthcare systems must continue to identify methods to address the complex, inter-related factors inclusive of social determinants of health, which impact health outcomes for our neighbors and citizens. Strategic partnerships with fellow state departments, industry associations (inclusive of Missouri Hospital Association, Missouri Primary Care Association, Missouri Health Care Association, and Missouri Area Agencies on Aging), academic partners and disciplinary-specific associations (inclusive of MSMA, Missouri Chapter of American Academy of Pediatrics, Missouri Association of Family Practice Physicians, Missouri Association of Osteopathic Physicians and Surgeons, and Missouri College of Emergency Physicians) make us confident that true progress will occur for Missourians.

DHSS looks forward to our continued partnership with Missouri State Medical Association and the state's medical providers to identify those opportunities for positive and sustained impact.

References

- Centers for Disease Control and Prevention. (2022, Aug. 24). Life expectancy at birth by state. https://www.cdc.gov/nchs/pressroom/sosmap/life_expectancy/life_expectancy.htm
- Missouri Department of Health and Senior Services (2022, December). Pregnancy-associated mortality review. <https://health.mo.gov/data/pamr/>
- Missouri Department of Health and Senior Services (2022, August). A multi-year look at maternal mortality in Missouri, 2017-2019 pregnancy-associated mortality review. <https://health.mo.gov/data/pamr/pdf/2019-annual-report.pdf>
- Missouri Public Health Association. (2020). Transforming the future of public health in Missouri. <https://www.healthiermo.org/fphs-model> **MM**

SENIOR FARMERS MARKET NUTRITION PROGRAM

Participant Requirements



ABOUT THE PROGRAM

The Missouri Senior Farmers Market Nutrition Program (MoSFMNP) provides benefits to low-income seniors (60 years of age or older) residing in one of 47 Missouri counties. Eligible seniors receive \$50 in benefits annually.

Benefits can be exchanged for eligible foods at a farmers market or roadside stand with an authorized farmer.

- Benefits issued to eligible participants: June 1-September 30

- Participants can redeem benefits: June 1 - October 31

*The program will run
June 1 - October 31.*

REQUIRED DOCUMENTATION

Age Verification *(one of the following)*

1. Driver's License
2. Birth Certificate
3. Passport
4. State ID

Income Verification *(one of the following)*

1. Maximum gross household income of not more than 185% of the annual federal poverty level.
 - Pay stub, income statement, W-2, tax return, SSI or bank statement
2. Participate in Missouri's Supplemental Nutrition Assistance Program (SNAP)
 - Must show current proof at time of application
3. Participate in the Commodity Supplemental Food Program (CSFP)

Residency Verification

(one of the following)

1. Utility bill
2. Paycheck
3. Bank statement
4. Government-issued check
5. Paid property tax receipt
6. Housing rental contract

Senior Farmers Market Nutrition Program Local Agency Contact

St. Louis Area

Jefferson, St. Louis & St. Charles Counties
636-207-0847
Franklin County & St. Louis City
1-888-515-0016

Mid-Missouri Area

Aging Best AAA Office
1-800-369-5211

Kansas City Area

MU Extension
1-888-515-0016

Southwest/South Central Area

SeniorAge AAA Office
417-862-0762

USDA Non-Discrimination Statement:

In accordance with Federal civil rights law and U.S. Department of Agriculture (USDA) civil rights regulations and policies, the USDA, its Agencies, offices, and employees, and institutions participating in or administering USDA programs are prohibited from discriminating based on race, color, national origin, religion, sex, gender identity (including gender expression), sexual orientation, disability, age, marital status, family/parental status, income derived from a public assistance program, political beliefs, or reprisal or retaliation for prior civil rights activity, in any program or activity conducted or funded by USDA (not all bases apply to all programs). Remedies and complaint filing deadlines vary by program or incident. USDA is an equal opportunity provider, employer, and lender.



Mid-Missouri Area

Audrain	Dent	Moniteau
Boone	Gasconade	Morgan
Callaway	Washington	Osage
Camden	Howard	Phelps
Cole	Laclede	Pulaski
Cooper	Maries	
Crawford	Miller	

Kansas City Area

Buchanan	Jackson
Cass	Platte
Clay	Ray

St. Louis Area

Franklin	St. Louis City
Jefferson	St. Louis County
St. Charles	

Springfield Area

Barry	Howell	Shannon
Christian	Lawrence	Stone
Dade	Wright	Taney
Dallas	Oregon	Texas
Douglas	Ozark	Webster
Greene	Polk	

Benefits can ONLY be redeemed at a farmers market or roadside stand!

Locally Grown

in Missouri or a bordering Illinois or Kansas county



FRUITS
(fresh and unprocessed)

Examples include:
apples, blackberries, blueberries, cherries, elderberries, gooseberries, grapes, melons, peaches, pears, raspberries and strawberries



HONEY (pure/raw)

Examples include:
comb honey, liquid honey, naturally crystallized honey and honey sticks

Ineligible Foods

- Dried fruits or vegetables
- Meats, seafood, eggs, cheese, processed goods or baked goods
- Potted fruits, vegetables or herbs
- Wild rice, nuts of any kind, maple syrup, cider, seeds and flowers



VEGETABLES
(fresh and unprocessed)

Examples include:
asparagus, beans, beets, broccoli, cabbage, carrots, cauliflower, celery, corn, cucumbers, eggplant, greens, kale, kohlrabi, leeks, lettuce, mushrooms, okra, onions, peas, peppers, potatoes, pumpkins, radishes, rhubarb, rutabaga, salad mixes, spinach, squash, tomatoes, turnips and zucchini



COOKING HERBS (fresh cut)

Examples include:
basil, chives, cilantro, dill, fennel, garlic, marjoram, mint, oregano, parsley, rosemary, sage, savory, tarragon and thyme





Jefferson County Health Department will champion positive health outcomes and behaviors through innovative programs and community engagement.

Community Services Board Report- July 2023

(Analytics and Updates from June 2023)

The Community Services Department consists of our Communicable Disease Prevention Team, Environmental Public Health Team, Public Health Preparedness Planner and the Special Healthcare Needs Team. This team manages the non-clinical public health programs.

Foundation of Public Health Module Areas of Capability and Expertise:

Communicable Disease Prevention: On June 26, 2023, the CDC issued a health alert to share identification of locally acquired cases of Malaria in Florida and Texas. Malaria is a mosquito-borne disease caused by a parasite. People with Malaria often experience high fevers, chills, and flu-like illness. While these are the first cases of locally acquired malaria since 2003, there are around 2000 cases of malaria that are treated in the US each year, mainly individuals who have traveled to areas where Malaria is endemic.

Warming temperatures and wetter climates are favorable breeding conditions for mosquitos and may lead to increased mosquito population and transmission of diseases not previously found in the US. However, the risk of Malaria in Jefferson County remains low.

Malaria is not spread from person to person like a cold or the flu, and requires the bite of an infected mosquito to get sick. The best way to prevent Malaria is to avoid getting bitten by mosquitoes.

- Keep doors and windows closed and/or install screens.
- Use insect repellent when outdoors.
- Wear long sleeve shirts or long pants when appropriate.
- Reduce mosquito breeding grounds in your yard by dumping out areas that may contain standing water.

If you suspect you have Malaria, contact your healthcare provider immediately. Like many other communicable diseases, if Malaria is left untreated, it may cause severe complications or death.

Malaria is a reportable condition in Missouri, which means after being diagnosed, your provider reports the positive test result to the Jefferson County Health Department. You will then receive a call from the communicable disease team to conduct a short interview and answer any questions you may have. Our interview process has a primary goal of collecting important information that will help with further surveillance and disease prevention.

If a resident of the county tested positive for Malaria or West Nile Virus we would increase mosquito control spraying and surveillance in the area to increase protection to residents.

Mission: Capacity to prevent and stop the spread of disease through strategies such as surveillance, investigation, education, and interventions.

Programs: Communicable Disease Investigation, Vector Control, Animal Bite Investigations

Funding Sources: Public Health Emergency Preparedness (PHEP) MO DHSS Contract, Epidemiological and Laboratory Capacity Enhancing Detection Expansion (ELC-EXP) MO DHSS Contract.



Champion positive health outcomes and behaviors through innovative programs and community engagement

Communicable Disease Surveillance Summary Report Jefferson County, Missouri

June 2023

NOTES ON THE DATA:

- All data and information are conditional and may change as more reports are received.
- Case definitions are established by the Missouri Department of Health and Senior Services' (DHSS) Communicable Disease Investigation Reference Manual. The totals reflect the number of confirmed and probable cases reported; suspect cases are not included.
- Data is reported in epidemiologic weeks established by the CDC's Morbidity and Mortality Weekly Report (MMWR). The MMWR week starts on a Sunday and ends on Saturday. Values for MMWR week range from 1 to 53, although most years consist of 52 weeks. The 2023 MMWR calendar began on January 1, 2023.
- Case date may be based on the onset date, diagnosis date, specimen date, or test date.
- Excluded from this report are Sexually Transmitted Diseases, Influenza, and COVID-19.
- Jefferson County Health Department monitors all reportable disease cases year-round. Figures 1. and 2. include detailed views of diseases or conditions that may be of importance during the time of year this report is published. Variables such as outbreaks or the seasonality of communicable diseases may affect the number of cases per month and call for a more in-depth look. Seasonal change in the incidence of infectious diseases is common.

**Table 1. Number of Enteric Cases by Month,
Jefferson County, Missouri**

Disease or Condition	Five Previous Months					Year to Date Comparison		
	February 2023	March 2023	April 2023	May 2023	June 2023	YTD 2023	YTD 5 Previous Year Mean	YTD Alert ¹
Campylobacteriosis	1	3	6	3	2	16	11.6	*
Cryptosporidiosis	0	0	0	0	0	0	1	
Cyclosporiasis	0	0	0	0	0	0	0.6	
E. Coli O157:H7	0	0	0	0	0	0	0.6	
E. Coli Shiga Toxin +	0	0	0	0	0	0	0	
Giardiasis	0	0	0	0	0	0	0.4	
Hepatitis A Acute	0	0	0	0	0	0	3	
Listeriosis	0	0	0	0	0	0	0.2	
Salmonellosis	1	3	1	8	2	16	11.2	*
Shigellosis	0	0	0	0	0	0	0.4	
Yersiniosis	0	1	0	0	0	1	1.8	
Enteric Totals	2	7	7	11	4	33	30.8	

¹ Year- to- Date alerts represent an increase of at least one standard deviation for total cases in the current year compared to the same time period in the five previous years.

**Table 2. Number of Respiratory and Systemic Disease Cases by Month,
Jefferson County, Missouri**

Disease or Condition	Five Previous Months					Year to Date Comparison		
	February 2023	March 2023	April 2023	May 2023	June 2023	YTD 2023	YTD 5 Previous Year Mean	YTD Alert
Coccidioidomycosis	0	0	0	0	0	0	0	
Haemophilus Influenzae, Invasive	0	1	0	0	0	3	3.2	
Legionellosis	0	0	0	0	0	0	1.2	
Pertussis	0	1	0	0	0	1	9.6	
Staph Aureus, VISA	0	0	0	0	0	0	1.2	
Streptococcus Pneumoniae, Invasive	2	3	0	1	0	10	16.2	
Streptococcal Toxic Shock Syndrome	0	0	0	1	0	1	0.2	
Varicella	0	0	0	0	0	2	1.6	
Respiratory and Systemic Totals	2	5	0	2	0	17	33.2	

**Table 3. Number of Vector-Borne Cases by Month,
Jefferson County, Missouri**

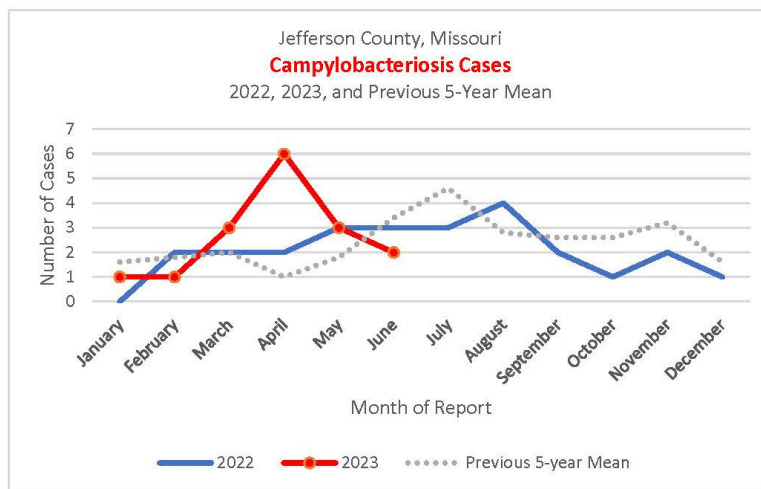
Disease or Condition	Five Previous Months					Year to Date Comparison		
	February 2023	March 2023	April 2023	May 2023	June 2023	YTD 2023	YTD 5 Previous Year Mean	YTD Alert
Anaplasma Phagocytophilum	0	0	0	0	0	0	0	
Babesiosis	0	0	0	0	0	0	0.2	
Ehrlichia Chaffeensis	0	0	1	1	5	7	8.8	
Ehrlichia Ewingii	0	0	0	0	0	0	0.2	
Ehrlichiosis Anaplasmosis Undetermined	0	0	0	1	0	1	0.8	
Rocky Mountain Spotted Fever	0	0	0	0	2	2	3.4	
Tularemia	0	0	0	0	0	0	0	
Vector-Borne Totals	0	0	1	2	7	10	13.4	

**Table 4. Number of Other/Miscellaneous Cases by Month,
Jefferson County, Missouri**

Disease or Condition	Five Previous Months					Year to Date Comparison		
	February 2023	March 2023	April 2023	May 2023	June 2023	YTD 2023	YTD 5 Previous Year Mean	YTD Alert
Animal Bites	20	18	24	22	11	119	81.8	*
MOTT	2	6	2	1	4	15	10.6	*
Rabies Animal	0	0	0	0	0	0	0.2	
Rabies Post Exposure Prophylaxis	1	2	2	5	0	11	4.6	*
TB Disease	0	0	0	0	0	0	0.6	
TB Infection	1	1	2	3	2	11	21.4	
Other/Miscellaneous Totals	24	27	30	31	17	156	119.2	

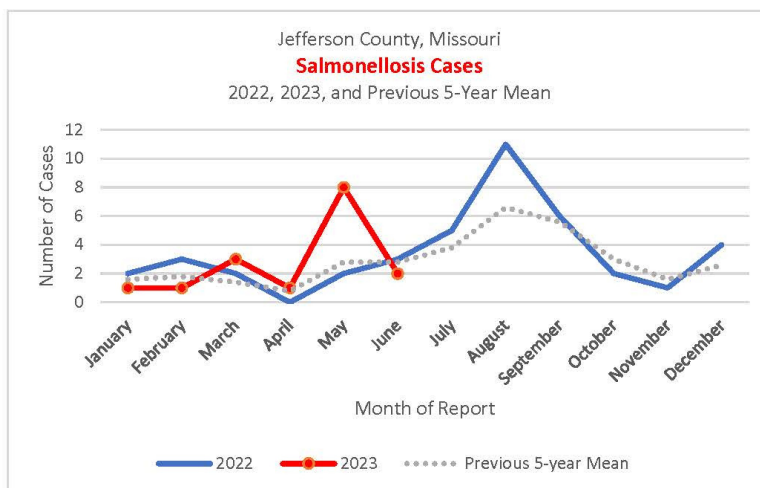
**Figure 1. Campylobacteriosis
Jefferson County, Missouri**

Campylobacter infection, or campylobacteriosis, is caused by Campylobacter bacteria. Campylobacteriosis is one of the most common causes of diarrheal illness in the United States. There are 21 Campylobacter species; however, Campylobacter jejuni and Campylobacter coli are the two species that most often infect humans. Almost all persons infected with Campylobacter recover without any specific treatment. Antimicrobial therapy is warranted only for patients with severe disease or those at high risk for severe disease, such as those with immune systems severely weakened from medications or other illnesses. There were 2 cases of Campylobacteriosis reported during June 2023 in Jefferson County. During the previous 5 years, the number of cases has ranged from 0 to 8 per month. A year-to-date alert has been noted for Campylobacteriosis. Year-to-date alerts are present when the total cases in the current year are more than one standard deviation above the mean for the same time period in the previous five years.



**Figure 2. Salmonellosis
Jefferson County, Missouri**

Salmonella are a gram-negative, rod-shaped bacteria which can cause illness in both animals and humans. Nontyphoidal salmonellosis (NTS) refers to illnesses caused by all serotypes of Salmonella (S.) except for S. Typhi, S. Paratyphi A, S. Paratyphi B, and S. Paratyphi C. There were 2 cases of Salmonellosis reported during June 2023 in Jefferson County. During the previous 5 years, the number of cases reported has ranged from 0 to 11 per month. There are two multi-state outbreaks of Salmonella currently active. An outbreak of Salmonella linked to raw cookie dough was posted May 23, 2023. Cases have been reported in six states, including Missouri. Public health officials are also investigating multistate outbreaks of Salmonella linked to contact with backyard poultry. Cases have been reported in 45 states, including Missouri. A year-to-date alert has been noted for Salmonellosis. Year-to-date alerts are present when the total cases in the current year are more than one standard deviation above the mean for the same time period in the previous five years.



ADDITIONAL DATA SOURCES AND INFORMATION

Jefferson County Health Department's Covid-19 Data Dashboard
<https://www.jeffcohealth.org/covid19-data>

Jefferson County Health Department's Influenza Data Dashboard
<https://www.jeffcohealth.org/flu-season-info>

Missouri Department of Health and Senior Services, Communicable Disease Investigation Reference Manual:
<https://health.mo.gov/living/healthcondiseases/communicable/communicabledisease/cdmanual/index.php>

Environmental Public Health

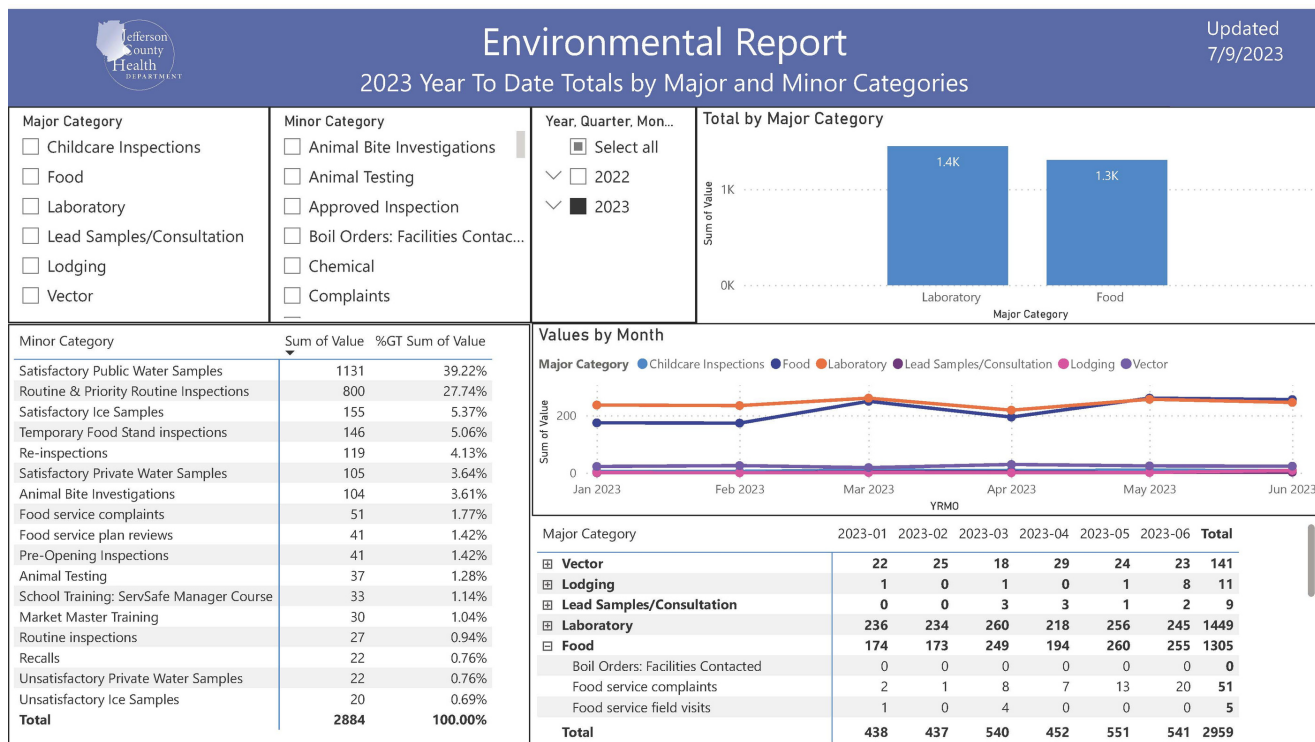
Environmental Public Health:

- On July 11, 2023, the U.S. Environmental Protection Agency (EPA) conducted a town hall meeting to allow public discussion and feedback on their proposed plan to address lead and other heavy metals in private wells in Southwest Jefferson County. The public comment period has been extended to August 4, 2023. Members of the JCHD Environmental team were in attendance to provide Lead education. See attached EPA publication for additional information.
- Piloting a grading system program with our food establishments. The goal of the program is to provide increased education during inspections with an anticipated outcome of lowering corrective actions (violations) during future inspections. This process provides a "grade" for the establishment to display. During this pilot period food establishments are voluntarily displaying their grade. We are collecting feedback from establishments after each inspection.

Mission: Capacity to reduce harmful exposures and foster safe and health environments that protect communities.

Programs: Food Program (Jefferson County Food Code, Food and beverages Permits, Temporary Permits, Farmers Market Master Training, and ServSafe Certifications), Water Sample Laboratory Services (Private and Public Water and Wells), Childcare Sanitation Inspections (CCSI), Lead Assessment and Education, and Lodging.

Funding Sources: Childcare Sanitation Inspections (CCSI) MO DHSS Contract, Summer Food Services Program (SFSP) MO DHSS Contract, Children's Health Insurance Program (CHIP) Health Services Initiative (HSI)-LEAD MO DHSS Contract, CORE MO DHSS Contract, Superfund Lead Health Education and Voluntary Institutional Control Program (VICP) MO DHSS contract, Environmental Implementation of Grading System and Advancement on Conformance with Program Standards (GSAC) FDA contract



Environmental Protection Agency Notifications and Fact Sheets



PUBLIC NOTICE: EPA Seeks Public Input on Proposed Plan to Protect Public Health from Lead and Other Metals in Private, Domestic Drinking Water Wells Across Jefferson County Southwest Jefferson County Mining National Priorities List (NPL) Superfund Site – Jefferson County, Missouri



The U.S. Environmental Protection Agency (EPA) Region 7 is seeking public input on EPA's Proposed Plan to address lead and other heavy metals in private, domestic drinking water wells at residential properties, including child care facilities, at the Southwest Jefferson County Mining NPL Superfund Site, which includes all of Jefferson County. Historic lead mining and smelting activities in the Old Lead Belt dispersed lead mining and smelting waste across areas of southeastern Missouri that impacted the Ozark Aquifer, an important source of water for private well owners. Lead is a toxic metal that is harmful if inhaled or swallowed. Lead can pose serious health risks at low concentrations, particularly to children under 7 years old, as well as those who are pregnant or nursing. Children under 7 living in this area should have annual blood tests. On July 11, EPA will host a Public Meeting to present its plan for responding to residents with contaminated wells. The public is encouraged to attend and provide oral comments. The Jefferson County Health Department will conduct blood lead testing for children and adults at no cost during the event.



EPA PUBLIC MEETING: Tuesday, July 11, 2023 – 6 to 8 p.m.

Festus R-VI School District Performing Arts Center, 501 Westwind Drive, Festus, MO 63028

Enter through Performing Arts Center lower level; the facility is next to the Festus High School.

At 6 p.m., EPA and its partners will be available to talk with community members in an Open House format.

At 6:30 p.m., EPA will deliver a presentation about the Proposed Plan, followed by an opportunity for oral and written comments to be transcribed into the record.



COMMENT PERIOD: On June 20, the Proposed Plan and supporting documents will be published online for public review at:

www.epa.gov/superfund/southwestjeffersoncountymining (click on **Site Documents & Data** and **Administrative Records**).

Public comments will be accepted for 30 days from Tuesday, June 20, through Thursday, July 20, 2023. EPA will provide its preferred approach for addressing contaminated groundwater wells, along with the other alternatives that were evaluated. The action is an interim approach in advance of a final decision. For more information and a Fact Sheet with maps, visit: www.epa.gov/mo/missouri-cleanups.

To comment, provide **oral comments** during the July 11 Public Meeting or send **written comments** to: Elizabeth Kramer, Community Involvement Coordinator, U.S. EPA Region 7, Office of Public Affairs (ORA/OPA), 11201 Renner Blvd., Lenexa, KS 66219 or send via email to: kramer.elizabeth@epa.gov. Upon timely request, the comment period can be extended by an additional 15 to 30 days. **Direct questions and requests for site information** to: Elizabeth Kramer (913-551-7186 or 1-800-223-0425); or Steve Sturgess, Remedial Project Manager (913-551-7913 or 1-800-223-0425, or email: r7-swjcmiming@epa.gov).

If you do not have internet access, you can view site documents online during normal business hours at the following locations: **De Soto Public Library**, 712 South Main Street, De Soto, MO 63020 (636-586-3858); or **EPA Region 7 Records Center**, 11201 Renner Blvd., Lenexa, KS 66219 (1-800-223-0425). Copies of the Proposed Plan can be mailed upon request.

FREE Private, Domestic Drinking Water Well Testing! If EPA has not already tested your property, and you would like to have your private, domestic drinking water well and/or residential yard tested for potential lead contamination for **free**, contact EPA (see info above) or EPA's Contractor, Tetra Tech, at **636-797-8446**, or email: r7-swjcmiming@epa.gov. EPA is committed to providing reasonable accommodations to individuals with disabilities. If you require accommodations for the Public Meeting, including translation into a language other than English, please contact EPA to make arrangements.



U.S. Environmental Protection Agency, Region 7 | 11201 Renner Boulevard, Lenexa, KS 66219 | Toll-free: 1-800-223-0425

Public Health Preparedness and Special Healthcare Needs

Public Health Preparedness (PHP) - Emergency Preparedness and Response:

- Anne-Marie Denny has transitioned into the role of Public Health Preparedness Planner for the agency. She has an extensive knowledge of community resources and will be key to ensuring public health response activities are accessible to all county residents. She has been attending Federal Emergency Management Agency (FEMA) and MO State Emergency Management Agency (SEMA) trainings and will begin the re-accreditation process for PPHR this fall.

Mission: Capacity to promote ongoing community resilience and preparedness, issue and enforce public health orders, share information with key partners and the general public, and lead the health and medical response to emergencies

Programs: Public Health Preparedness Planning and Response, Training and Exercises, and Project Public Health Ready (PPHR) Accreditation

Funding Sources: Public Health Emergency Preparedness (PHEP) MO DHSS Contract, Cities Readiness Initiative (CRI) MO DHSS Contract, Epidemiological and Laboratory Capacity Enhancing Detection Expansion (ELC-EXP) MO DHSS Contract.

Linkage to Medical, Behavioral, and Community Resources: Examples of resource navigation and case management provided to participants for both programs in the month of June:

- Temporary housing assistance
- Low Income Home Energy Assistance Program (LIHEAP) for energy assistance
- Mileage reimbursement for medical travel
- Orthodontics
- Highlighted Positive Outcome (generalized for participant privacy):
 - A current participant has gained guardianship for themselves and is finally able to start planning their wedding. JCHD, along with other MO advocacy departments, have been working with this participant for over a year to assist in regaining their independence.

JCHD contracts with MO Department of Health and Senior Services (MO DHSS) to provide resource navigation to connect participants to providers. MO DHSS reimburses providers for services and JCHD for staffing expenses through the ABI and CYSHCN contracts. No JCHD funds are utilized for this program.

Mission: Capacity to develop a strong network of partners with diverse expertise and resources to build a strong foundation for community health.

Programs: Adult Brain Injury and Children and Youth with Special Healthcare Needs Service Coordination and Public Health Preparedness inclusion planning

Funding Sources: Adult Brain Injury Program Service Coordination (ABI) Missouri Regions F and G, Children and Youth with Special Healthcare Needs Service Coordination (CYSHCN) Missouri Regions 10 and 11, and Epidemiological and Laboratory Capacity Enhancing Detection Expansion (ELC-EXP) MO DHSS Contract



Jefferson County Health Department will champion positive health outcomes and behaviors through innovative programs and community engagement.

Health Communications Board Report- July 2023

(Analytics from June 2023)

Health Communications recently underwent a structure change. In addition to the Public Information Officer, the team comprises a Public Communications Team Lead, three Public Communications Specialists, and an Organizational Development Specialist. No new positions were hired, but rather some employees from the Health Education team moved over to communications to better align with agency goals for increasing effective education and awareness of agency programs and services in the community. The Organizational Development Specialist has moved under this team as well to focus on increasing internal communications, workforce development, and accreditation efforts.

1

JCDPC Family Fun Day Event: June 8th at Salvation Army in Arnold, 285 community members attended. Over 30 community partners brought resources, education, and activities for families to engage with. Several JCHD programs attended including mobile dental and wellness van.

Foundational Areas: Chronic Disease Prevention, Injury Prevention, Linkage to Resources, Maternal, Child, & Family Health

Foundational Capabilities: Communications, Community Partnership Development, Assessment & Surveillance

2

Community Education & Events: Presented vaping education (46 high school students), attended two farmer's markets with the Smoothie Bike (31 kids), Oral Health Training for Childcare Providers (4 participants)

Foundational Areas: Chronic Disease Prevention, Injury Prevention, Maternal, Child, & Family Health

Foundational Capabilities: Communications, Community Partnership Development

3

Bike Helmets & Car Seats: Provided a bike rodeo at the Family Fun Event. 42 helmets were distributed to youth and properly fitted. 6 car seats were distributed and 9 car seats were checked by our car seat technicians

Foundational Areas: Maternal, Child, & Family Health, Injury Prevention

Foundational Capabilities: Communications, Community Partnership Development

Projects (continued)

4

Stress Management Program Summary: In the 2022/2023 school year, JCHD provided school staff stress management workshops and stress kits for the entire school to utilize. 8 workshops were provided to 5 school districts. Because of these workshops...

- 99.5% of participants stated they can correctly identify their sources of stress
- 99.5% of participants recognized their role in reducing their sources of stress
- 99.5% of participants could identify and practice strategies to reduce stress
- 98.34% of participants could create an individualized action plan to reduce stress

Foundational Areas: Chronic Disease Prevention, Injury Prevention, Linkage to Resources, Maternal, Child, & Family Health

Foundational Capabilities: Communications, Community Partnership Development, Assessment & Surveillance

5

Addressing Homelessness: Assistance in planning Project Homeless Connect. Planning the next Homeless & Essential Needs Outreach event in August working with community partners to bring needed services and resources.

Foundational Areas: Communicable Disease Prevention, Chronic Disease Prevention, Injury Prevention, Linkage to Resources,

Foundational Capabilities: Communications, Community Partnership Development, Emergency Preparedness & Response

6

JCHD Staff Development Day: Quarterly training day for all JCHD employees to complete required and timely trainings per agency workforce development plan.

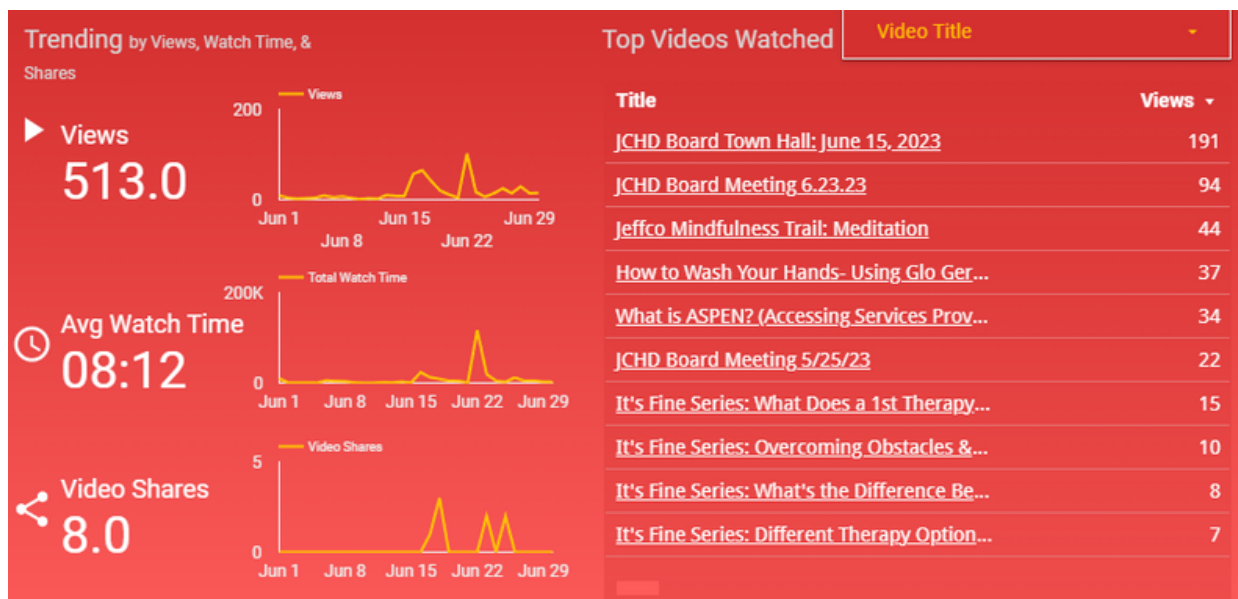
Foundational Capabilities: Communications, Community Partnership Development, Organizational Administrative Competencies, Accountability & Performance Management

7

Workforce Certifications: Collecting and organizing all employee certifications and trainings including licenses, driver training, and required employee onboarding trainings.

Foundational Capabilities: Organizational Administrative Competencies, Accountability & Performance Management

Social Media Analytics

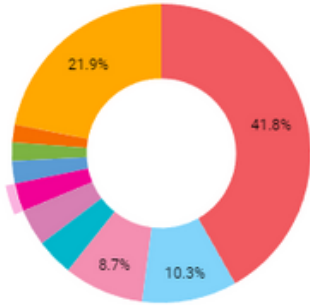


<p>f Fans</p> <p>17K fans</p> <p>↘ 3 from 17K</p>	<p>f Received PMs</p> <p>10 PMs</p> <p>↘ 9 from 19</p>	<p>f Page engagement rate</p> <p>2.41% engagement rate</p> <p>↘ 1.23 from 3.65%</p>	<p>f Post engagement rate</p> <p>2.51% engagement rate</p> <p>↘ 0.3 from 2.82%</p>
<p>@ Followers</p> <p>1.5K followers</p> <p>↗ 1 from 1.5K</p>	<p>@ Inbound messages</p> <p>4 messages</p> <p>↗ 2 from 2</p>	<p>@ Post engagement rate</p> <p>4.12% engagement rate</p> <p>↗ 1.12 from 3%</p>	<p>@ Post engagement</p> <p>41 engagements</p> <p>↗ 21 from 20</p>
<p>v Followers</p> <p>1.7K followers</p> <p>0 from 1.7K</p>	<p>v Inbound messages</p> <p>6 messages</p> <p>↘ 6 from 12</p>	<p>v Post engagement rate</p> <p>3.03% engagement rate</p> <p>↘ 5.73 from 8.76%</p>	<p>v Post engagements</p> <p>1 engagement</p> <p>↘ 8 from 9</p>

Website Analytics

Which page is the most popular?

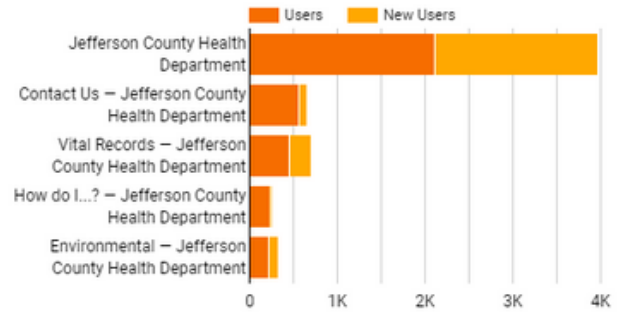
↑ ↓ 📄 A-Z ⋮



- /
- /contact
- /administrative-services
- /environmental
- /how-do-i
- /dental
- /covid19-data
- /careers
- /community-health
- others

Page	Pageviews
1. /	9,525
2. /contact	2,339
3. /administrative-services	1,975
4. /environmental	913
5. /how-do-i	912
6. /dental	691
7. /covid19-data	553
8. /careers	454
9. /community-health	439
10. /jeffco-wellness-walk	370

Most popular pages with title breakdown



Page Title	Pageviews
1. Jefferson County Health Depart...	9,675
2. Contact Us – Jefferson County ...	2,340
3. Vital Records – Jefferson Count...	1,972
4. Environmental – Jefferson Coun...	913
5. How do I...? – Jefferson County ...	912
6. Dental – Jefferson County Healt...	700
7. COVID-19 Data – Jefferson Cou...	556
8. Careers 2 – Jefferson County H...	457
9. Health Education – Jefferson C...	442
10. Jeffco Wellness Walk – Jefferso...	370

Query	Impressions	Clicks
jefferson county health department	6,695	389
jefferson county mo health department	76	26
jefferson county birth certificate	93	17
arnold health department	191	15
jchd	330	11
jeffcohealth.org	15	11
jefferson county vital records	139	10
jefferson county department of health	521	10
jeffco health department	105	10
jefferson county health dept	311	10
jefferson county missouri health department	32	10

A Level A Compliance
 Issues (149,321 issues affecting 504 pages)

97 issues done

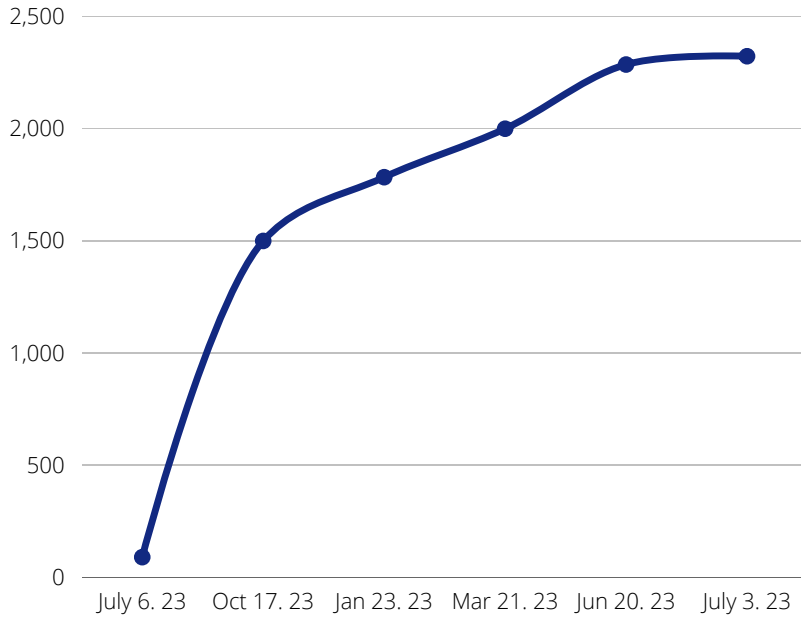
- 🚫 4 Errors
- 🔔 3 Warnings
- 👁️ 35 Needs review

AA Level AA Compliance
 Issues (125,475 issues affecting 504 pages)

13 issues done

- 🚫 2 Errors
- 🔔 1 Warnings
- 👁️ 22 Needs review

JCHD Mobile App Analytics



**2,322
DOWNLOADS**

**3 PUSH
NOTIFICATIONS**

Google Business Profile Analytics

Hillsboro Office: 904 Interactions

📞 515

calls
+8%

💬 3

messages
+50%

📍 193

people asked for
directions
+16%

🌐 193

website visits from
profile
-9%

👁️ 2,679

profile views
+3%

🔍 1,415

searches
+2%

Arnold Office: 1,246 Interactions

📞 597

calls
-1%

💬 2

messages
No change

📍 299

people asked for
directions
-4%

🌐 348

website visits from
profile
+10%

👁️ 3,660

profile views
-2%

🔍 1,881

searches
+1%



Jefferson County Health Department will champion positive health outcomes and behaviors through innovative programs and community engagement.

JUNE CLINICAL BOARD REPORT

Month Reporting: June 2023

Date: 07/21/23

Reported By: M. Melissa Parmeley, Clinical Services Manager

CLINICAL SECTION - PROGRAMS <i>FPHS</i>	CONTRACT/ GRANT	MONTHLY UPDATE
FAMILY PLANNING - Title X - The Right Time - Show Me Healthy Women - Wise Woman <i>Maternal, Child & Family Health</i> <i>Communicable Disease</i> <i>Access to Care</i>	Title X; The Right Time (TRT) Show Me Healthy Women (SMHW) Wise Woman (WW)	<p>On 06/23/23, JCHD completed a Missouri Department of Health and Senior Services review from the Section for Women’s Health of the Show Me Health Women (SMHW) and Wise Woman (WW) Programs and Contract. This review involved an on-site record review of participant charts for the past 3 years. This review also included an eligibility and billing review. All sections met with 100% compliance. Special thanks to Lisa Rhodes, SMHW Coordinator for JCHD for her diligent work in preparing for this review.</p> <p>Show Me Healthy Women (SMHW) offers free breast and cervical cancer screenings for Missouri women who meet age, income and insurance guidelines.</p> <p>WISEWOMAN (Well-Integrated Screening and Evaluation for Women Across the Nation) provides heart disease and stroke prevention health screenings and education to clients of the Show</p>

Jefferson County Health Department
405 Main Street, Hillsboro, MO 63050
Phone: 636-797-3737 Fax: 636-797-4631
www.jeffcohealth.org

		<p>Me Healthy Women (SMHW) program, Missouri's National Early Breast and Cervical Cancer Control Project.</p> <p>If you would like to learn more about these programs, please visit: Show Me Healthy Women Health & Senior Services (mo.gov) WISEWOMAN Health & Senior Services (mo.gov)</p>
<p>GENERAL CLINIC</p> <ul style="list-style-type: none"> - Immunizations - Tuberculosis (TB) - Lead - Wellness Labs - Sexually Transmitted Diseases (STD/STI) - Perinatal Hepatitis B - Child Care Health Consultation (CCHC) <p><i>Maternal, Child & Family Health</i> <i>Communicable Disease</i> <i>Access to Care</i> <i>Injury Prevention</i></p>	<p>Vaccines for Children (VFC/317) Adult Immunization Contract (AIG) EPA Superfund Lead Health Education CHIP CORE Public Health Program Support 23-24</p>	<p>The JCHD Immunization Program continues to have an open RN position posted. The JCHD Nursing staff are doing a great job of filling this gap. The position has been posted since May with limited interest and only one interview. We are anticipating a significant increase in immunization appointments coming in the next 2 months due to back-to-school needs. We were notified recently that there may be a short supply of State funded vaccines for the 317 program this fall. The adult immunization program is working with Jefferson College to provide on-site rabies vaccinations for the veterinary program starting in July.</p> <p>The TB program case management included the following in June:</p> <ul style="list-style-type: none"> Active TB Direct Observation Therapy: 1 Latent TB Direct Observation Therapy Cases: 2 Latent TB Investigations: 10 Potential new cases: 6 Closed Cases: 3 Contact investigations: 0 <p>The Lead program at JCHD tested 12 children at JCHD locations in June with no elevated results. The Program is currently managing 90 open cases, with 5 new cases opened in June and 3 cases closed in June.</p>
<p>COMMUNITY CLINIC</p> <ul style="list-style-type: none"> - Mobile Wellness - Communicable Disease Testing - Prevention - Community Clinics 	<p>Local Public Health Disparities; Program Support 23-24 ELC; AIG Missouri Mini Grant Prevent Ed</p>	<p>The JCHD Mobile Wellness Program was in the community for a total of 14 days in June. The program saw 79 patients with 15 of those being new patients to the program. Locations visited in June included residential facilities and participation in a Family Engagement event. An increase was noted in the number of physicals seen in June (17). Additional visit types included well visits,</p>



Jefferson County Health Department will champion positive health outcomes and behaviors through innovative programs and community engagement.

<p>- Project Life Saver</p> <p><i>Maternal, Child & Family Health</i> <i>Communicable Disease</i> <i>Access to Care</i> <i>Injury Prevention</i></p>		<p>sick visits, check-ups for medication refills, blood pressure checks, diabetes screenings and lead screenings.</p> <p>On June 7th the Mobile Wellness Van was involved in a vehicle incident that resulted in damage to the van. Since then, the team has been extremely flexible and has continued community events by utilizing a sprinter van. Although there is less room in the sprinter van, the team has been coordinating with locations to ensure appropriate space is available for patient needs. Patients that need additional services are being seen at the Hillsboro and Arnold office locations by the team one day/week. The Mobile Wellness team has begun the process to evaluate cost and needs for a new mobile unit for this program. The team is planning to evaluate future grant opportunities to plan for the replacement of the mobile wellness van in the future.</p> <p>The new member of the community clinical team is the Prevention Specialist who transitioned from the Health Education team. She has started to make connections with the Children’s Division for collaboration with the Wellness and Dental Programs in the future. The Prevention report for the Missouri Mini grant for the Community Vaping Education Campaign is attached for review. The program has collected 137 vape devices so far since the campaign started in August 2022. These devices were all disposed of through the Jefferson County Health Department’s partnership with Walgreens.</p>
--	--	---

Jefferson County Health Department
405 Main Street, Hillsboro, MO 63050
Phone: 636-797-3737 Fax: 636-797-4631
www.jeffcohealth.org

DENTAL

- Pediatric Mobile Dental
- Sealant
- Adult Mobile Dental

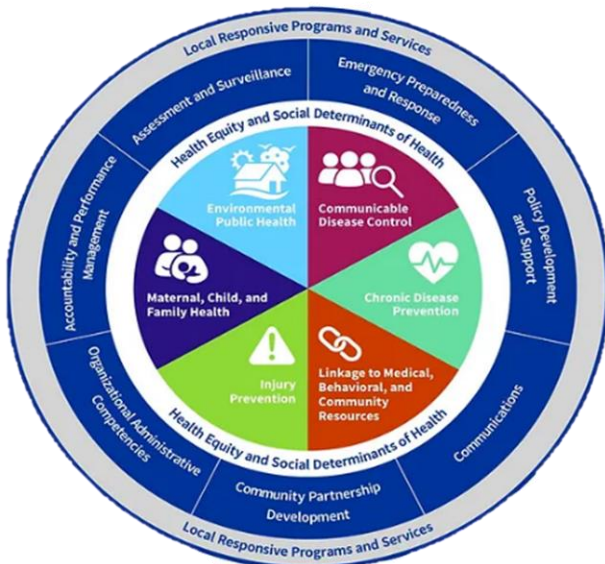
*Maternal, Child & Family Health
Access to Care*

Sealant and Tele dentistry
CHIP CORE Public Health

One training session was completed with Curve Electronic Dental Record System to learn about reporting and billing mechanisms within the system. One additional training is being scheduled for August.

The Dental Program has two posted openings for two Dental Assistants. These openings have been posted since 06/29/23 with only a single applicant for each and only one interview currently scheduled. Despite these openings, the limited dental team still saw 110 patients and completed 407 procedures in June.

The dental staff participated in the community Family Fun event in June. It was a great event for kids and parents who were also able to get connected with resources they needed. There were many different JCHD departments and community partners present. Dental was able to provide attendees with dental appointments scheduled for Medicaid and no insurance children. The team also handed out 80 toothbrush bags at this event.



[HealthierMO | Missouri FPHS Model](#)



SHOW ME HEALTHY WOMEN

A free breast and cervical cancer screening program

What is Show Me Healthy Women?

Show Me Healthy Women (SMHW) began in 1992, and is Missouri's implementation of the National Breast and Cervical Cancer Early Detection Program (NBCCEDP).¹ It provides free breast and cervical cancer screenings throughout Missouri, for women meeting certain age, income and insurance guidelines.² SMHW is funded by the Centers for Disease Control and Prevention (CDC) and several national, regional and local partner organizations.

Who qualifies for Show Me Healthy Women?

Figure 1 shows the estimated number³ of Missouri women eligible for, and number screened by SMHW. To be eligible for SMHW services, women must meet all of the following guidelines:

- Income at or below 250 percent of the federal poverty level for household income.
- Age 35 to 64, or older if they do not receive Medicare Part B.
- No insurance to cover program services.

All women who meet the above criteria are eligible for services regardless of provider location.

Where are services available?

- Providers in 90 counties plus the City of St. Louis offer services for Show Me Healthy Women.
- There are 200 provider locations throughout the state, including local public health agencies, federally qualified health centers, hospitals, private physician offices and not-for-profit health centers.

A full listing of providers is available on the SMHW website: Health.Mo.Gov/showmehealthywomen

What services are offered?

Figure 2 shows the number of screening and diagnostic services provided by SMHW, from 2019 through 2021.²

Screening services

- Clinical breast exams (CBE)
- Screening mammograms for women age 50-64
- Screening mammograms for women 40-49 using donated funds, if available
- Pap tests
- Pelvic exams

Diagnostic services

- Specialist consultation (breast and cervical)
- Diagnostic mammograms
- Ultrasound
- Fine needle aspiration
- Cold knife conization (diagnostic purposes)
- Breast biopsies
- Loop electrode biopsy (LEEP)
- Colposcopy (with or without biopsy)

Who benefits from Show Me Healthy Women?

- Based on the U.S. Census Bureau population estimates in 2021, approximately 97,786 Missouri women, aged 35- 64 (6.5 percent), are eligible for SMHW services.⁴
- Statewide, SMHW provides services for about 5,500 to 6,500 women each year.²
- About 100 breast cancers and 40 to 60 cervical cancers are identified and referred for treatment each year.

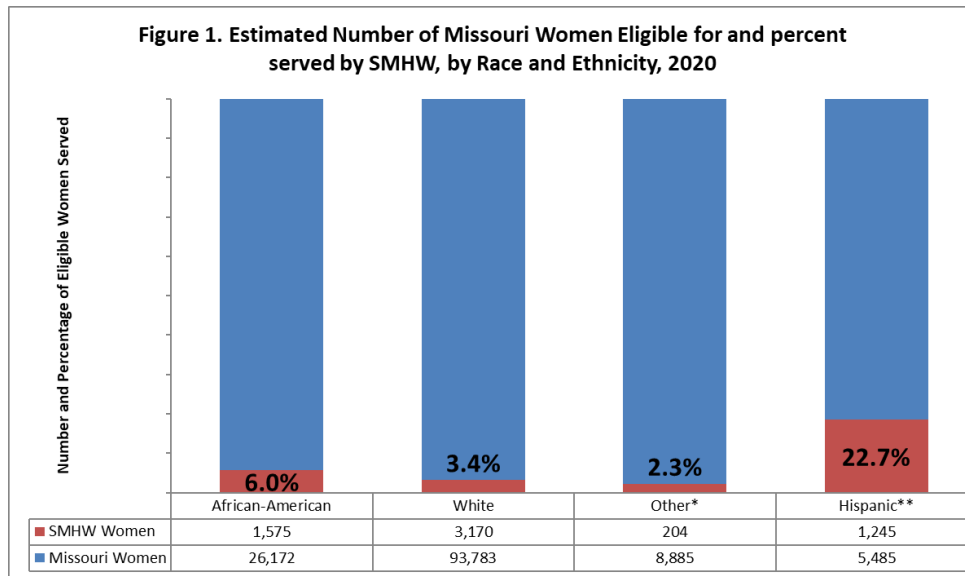
Missouri Department of Health and Senior Services

912 Wildwood Drive | Jefferson City, MO 65109

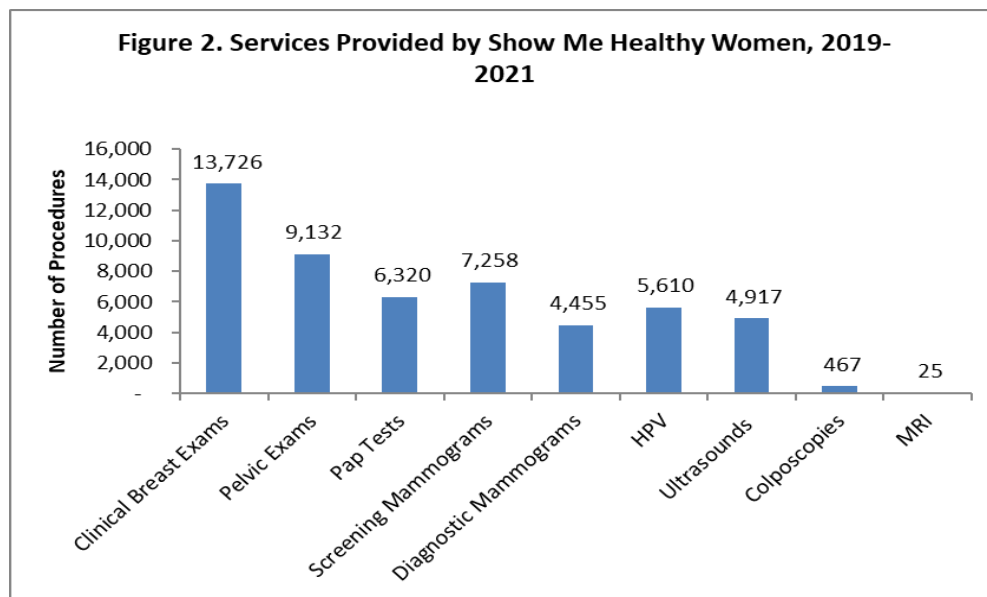
3/7/2023

Show Me Healthy Women

A free breast and cervical cancer screening program



† Current Population Survey Estimates are based on annual American Community Survey sampling for 2020, by the U.S. Census Bureau
 * "Other" includes clients who reported: American Indian/Alaska Native, Native Hawaiian/Pacific Islander, Asian, and Two or more races.
 ** Hispanic ethnicity is asked as a separate question from race and may include any or all combinations reported for race.



References

- ¹ U.S. Centers for Disease Control and Prevention. *National Breast and Cervical Cancer Early Detection Program*. <http://www.cdc.gov/cancer/nbccedp/> Retrieved January 21, 2023.
- ² Missouri Department of Health and Senior Services. *Show Me Healthy Women Program*. www.health.mo.gov/showmehealthywomen Retrieved January 21, 2023.
- U.S. Census Bureau. *Current Population Survey, CPS 2020 Annual Social and Economic Supplement (ASEC)*. <http://www.census.gov/cps/data/cpstablecreator.html> Retrieved January 21, 2023.

Do you qualify for WISEWOMAN?

To qualify, you must be a female resident of Missouri between the ages of 40-64 years old and:

- Currently enrolled in the Missouri Breast and Cervical Cancer Screening program (Show Me Healthy Women)
- Uninsured, or unable to afford the costs of preventative screenings because of high deductibles or copays (underinsured)



Did you know?

- Heart disease, also known as cardiovascular disease (CVD), is the number one killer of Americans
- More than half of all CVD deaths are women
- CVD includes:
 - Stroke*
 - High blood pressure*
 - Congestive heart failure*
 - Hardening of the blood vessels*
 - Other diseases of the circulatory system*
- One in three adult women have some form of CVD
- A woman's risk of CVD increases with age

Choose the Path to Healthy Living...



Schedule regular checkups and screenings

You can take advantage of the Missouri Breast and Cervical Cancer Program and Missouri WISEWOMAN Program in one combined visit.

Eat healthy

Eat at least five servings of fruits and vegetables, along with lean protein sources, low fat dairy products, whole grains and healthy fats. Choose healthier cooking methods like baking and grilling.

Become more active

Strive for 30 minutes of moderate physical activity on most days of the week. Begin with small changes that increase your everyday activities like taking the stairs or parking your car further from the entrance. Talk to a medical provider before starting any exercise program.

Stop smoking

Quitting smoking is one of the most important things that you can do for your health. Breaking this one habit can help you live longer and better and lower your chances of having a heart attack, stroke or cancer.

Why be a WISEWOMAN?

- Heart disease is a major health problem for women, especially in Missouri.
- Heart disease claims the lives of more women than cancer, chronic respiratory diseases, Alzheimer's disease, and diabetes combined.
- Preventive health care is critical for identifying those at risk and intervening early.
- WISEWOMAN offers services to prevent heart disease and other major health problems including pre-diabetes and weight gain.

LIFE'S SIMPLE SEVEN FOR REDUCING CVD FROM THE AMERICAN HEART ASSOCIATION

1. Get active
2. Eat better
3. Lose weight
4. Stop smoking
5. Control cholesterol
6. Reduce blood sugar
7. Manage blood pressure

Well-Integrated Screening and Evaluation for WOMen Across the Nation

What is WISEWOMAN?

Our goal is to help you decrease your risk of heart disease and other chronic illnesses with FREE, preventative screenings. WISEWOMAN provides information and tools to help you:

- Eat healthy
- Stay active
- Lose weight
- Quit smoking

WISEWOMAN offers you FREE preventative screenings for:

- Blood pressure
- Cholesterol
- Glucose (blood sugar)
- Body Mass Index (BMI)

These additional services for healthier living are also available without charge:

- Lifestyle program
- Nutrition education
- Physical activity resources
- Smoking-cessation programs

**BECAUSE YOUR
HEALTH IS
PRICELESS
OUR HEALTH SCREENINGS
ARE FREE**



Missouri Department of Health
and Senior Services
WISEWOMAN
P.O. Box 570
Jefferson City, Missouri 65102-0580
866-726-9926

[www.health.mo.gov/living/healthcondiseases/
chronic/wisewoman](http://www.health.mo.gov/living/healthcondiseases/chronic/wisewoman)

AN EQUAL OPPORTUNITY/AFFIRMATIVE ACTION EMPLOYER
Services provided on a nondiscriminatory basis.

Alternate forms of this publication for persons with disabilities may be obtained by contacting the Missouri Department of Health and Senior Services at 573-522-2845.
Hearing- and speech-impaired citizens can dial 711.

Funding was made possible by grant
#6 NU58DP006650-01-01 from the
Centers for Disease Control and Prevention.

#537 01/2019



**BE WISE ABOUT
YOUR HEALTH**



WISEWOMAN™

Missouri Department of Health and Senior Services

Missouri Mini-Grant Program Final Report

FY2023

Thirty days after the conclusion of program activities (no later than July 31st), each funded program must submit to their Prevention Resource Center a Final Program Report. **Failure to submit this report will result in loss of funding for future programming.**

Registered Coalition Name (as it appears on the registry): Jefferson County Drug Prevention Coalition (JCDPC)

Title of Program / Activity Conducted: Community Vaping Education Campaign

Prevention Resource Center: PreventEd

Prevention Resource Center Prevention Specialist: Kristin Bengtson

Grant Contact Person: Kristin Bengtson

Email: kbengtson@prevented.org

Please answer the following questions as they apply to the narrative in the grant application.

1. Identify the strategy/program implemented as a result of this funding. The strategies/programs implemented through this grant are as follows:
 - a. Implementation of an educational anti-vape campaign in Jefferson County Middle and High Schools. This campaign provides information to youth, caregivers, and youth advocates as to the toxic chemicals contained in vape juices, health risks involved, and discusses the mental health issues involved with using vape products.
 - b. Installing locking vape disposal boxes in local middle and high schools and other community organizations. At this point, we have boxes installed in five local school districts (4 high schools, 5 middle schools, and 2 alternative schools), one local library and the local community college (two separate campuses) is participating in the educational aspect of the campaign.
 - c. Providing information to schools, students, and parents about the risks of vaping through formal and informal educational events such as open houses, community events through the means of hand-outs, presentations, etc. Meetings with school officials have been conducted and literature and handouts have been provided. Also, community officials, such as library directors have been contacted about the program and been provided with literature also and been asked to meet with as well. A community event was held at Spring Hills Presbyterian Church in October 2022 (Parent's Night Out) and literature was passed out to parents in attendance. A Parent Education Seminar was held at the Spring Hills Presbyterian Church in March of 2023 and literature was passed out to parents in attendance and the campaign was discussed verbally. Vaping presentations were held at Ridgewood Middle School in March and May of 2023 and Windsor High School in June 2023. A verbal presentation was given, and handouts

were passed out at Fox High School in March 2023. A Family Engagement Event was held at the Salvation Army in June 2023 and handouts were passed out.

2. Briefly describe how the strategy was implemented. What, if any, deviations from the original plan occurred? How many people were served?
 - a. JCDPC staff implemented our strategy by using information from the monthly Vaping & Dabbing Workgroup Meetings, monthly Teen Coalition Meetings and contacting school personnel who had previously communicated an interest in the campaign. Once the vaping disposal boxes and acrylic flyers were ordered, JCHD staff members started working on flyers and posters for the campaign. The Jefferson County Teen Coalition was also part of this process as well.
Once the vaping disposal boxes and acrylic flyers were received and all the flyers, posters, and handouts were printed off and received meetings were requested and scheduled with local school personnel, as well as library directors and the local community college. A Food Safety Task Force Meeting was also held in October of this year at Jefferson County with local businesses where this campaign was discussed, and handouts were provided to about 30 different organizations.
 - b. Our timeline deviated from the original plan of having the boxes installed in all 11 school districts located in Jefferson County. However, the local community college is participating in the educational aspect of the campaign and a local library is also participating in the campaign. Also, the mentioned evaluation did not take place.
 - c. With five local schools, the library, and the local community college participating in the campaign, it is estimated that 23,099 youth/young people and community members benefit from this program. This surpasses the 10,000 targeted in the original plan. The youth in the Jefferson County Teen Coalition also wrote, produced, and shot 3 short video clips for the campaign. These will be sent out as “pop-up” ads throughout Jefferson County and have the ability to reach thousands more youth and community members.
3. Describe the process and outcome data in detail (if unsure of what these terms mean, contact the Prevention Resource Center). The outcome data is that 137 vapes were collected and disposed of since this campaign started in August 2022. These devices were all disposed of through Jefferson County Health Department’s partnership with Walgreens.
4. What changes have been made in the strategy/program as a result of the evaluation? How will the results listed above be sustained? N/A
5. What type of training or technical assistance are needed to continue moving forward? N/A

Mini-Grant Program Final Report Demographic Page

Indicate the number of individuals in the following groups who received services from this program:

(Report non duplicated numbers served for each event. Duplicate pages as needed for multiple events.)

AGE	
Age 0-4	
Age 5-11	
Age 12-14	2,363
Age 15-17	3,856
Age 18-20	3,680
Age 21-24	
Age 25-44	
Age 45-64	
Age 65 & over	
Unknown	13,200

ETHNICITY	
Hispanic or Latino	
Not Hispanic or Latino	
Ethnicity Unknown	

GENDER	
Male	
Female	
Gender Unknown	

RACE	
White	
Black or African Am.	
NH/Other Pacific	
Asian	
American Indian	
More than One Race	
Other Race	
Race Unknown	



JUNE 2023 ASPEN PROGRAM REPORT

PRESENTED AT THE JULY 28th, 2023, REGULAR MEETING OF THE JEFFERSON COUNTY HEALTH
CENTER BOARD OF TRUSTEES

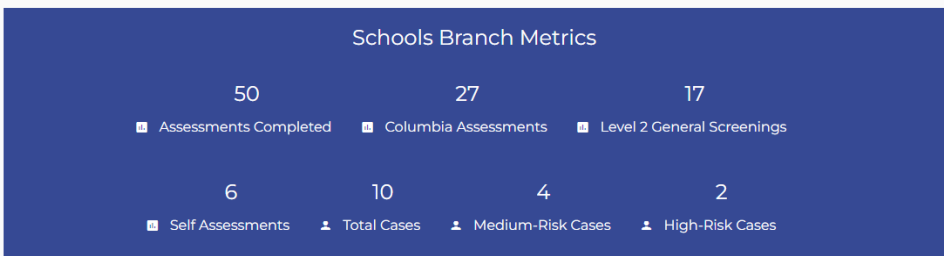
The below tables present the activities and work performed for the month of March 2023 and display the alignment with grants, contracts, and the deliverables which each grant and contract were awarded upon. Such alignment also conforms with the Missouri Foundational Public Health Services Model.

PROGRAM	DELIVERABLE/FOUNDATION CAPABILITY	CURRENT OUTCOMES, IMPACTS & PROGRESS
<p>ASPEN: Community Resource Directory Missouri Foundational Public Health Services Model: -Linkage to medical, behavioral and community resources. -Community Partnership Development</p> <p><u>FUNDING STREAM</u> Jefferson Foundation Transformative Grant</p> <p>Missouri DHSS Health Disparities contract</p>	<p>Public Health Capacity; Linkage to medical, behavioral and community resources:</p> <ul style="list-style-type: none"> • Identify statewide, regional, and local medical and behavioral healthcare community partners and their capacities. • Develop and implement a prioritized plan for increasing access to quality health care. • Support community-based initiatives that increase access to quality medical and behavioral healthcare. • Ability to create and maintain strategic, non-program specific relationships with key community partners. 	<p>ASPEN Coordinator is waiting to finalize JCHNetwork.org/ASPEN site updates with the marketing consultant. This will include detailed FAQ information, videos, additional resources, crisis information, program details and more.</p> <p>Resource Updates: June’s area of focus was developing ongoing resource maintenance processes and procedures and working to update current mental health resources available on the directory. July will include a focus on nutrition and dietician resources.</p> <p><u>Current Community and Regional Resources in Public ASPEN Directory:</u> Community Resources: 1,067 School Internal Resources: 9</p>

Resources can be found at the following URL:
<https://bh.ichnetwork.org/public/resource-directory>

PROGRAM	DELIVERABLE/FOUNDATION CAPABILITY	CURRENT OUTCOMES, IMPACTS & PROGRESS
<p>ASPEN: School Behavioral Health Portal</p> <p>Missouri Foundational Public Health Services Model: -Linkage to medical, behavioral and community resources. -Injury Prevention</p> <p><u>FUNDING STREAMS</u></p> <p>Jefferson Foundation Transformative Grant</p> <p>Missouri DHSS Health Disparities contract</p>	<p>Public Health Capacity; Linkage to medical, behavioral and community resources:</p> <ul style="list-style-type: none"> • Provide timely, accurate, and locally relevant education to the community on the behavioral health care system. <p>Injury Prevention:</p> <ul style="list-style-type: none"> • Identify statewide, regional and local injury prevention community partners and their capacities • Work with partners to implement evidence based and populations-based interventions that mitigate suicide risk 	<p>June 2023 focus included connecting with Jefferson College to begin a partnership and utilization of ASPEN. This process included working collaboratively with attorneys to review ASPEN agreement documentation.</p> <p>ASPEN staff have provided current schools working with ASPEN access to the recently developed marketing/awareness video that provides details about ASPEN. Additional marketing and education materials are in progress.</p> <p><u>June 2023 ArchitectNOW Development and Maintenance:</u></p> <ul style="list-style-type: none"> • Update parent agreement information to meet user requests for a more user-friendly process. • Develop a reporting option for ASPEN and School Administration to access de-identified reports. • Ongoing weekly security scans and vulnerability scans.

July 6th, 2023, at 3:11 PM CT



PROGRAM	DELIVERABLE/FOUNDATION CAPABILITY	CURRENT OUTCOMES, IMPACTS & PROGRESS
<p>ASPEN: First Responder and Health Care Worker Portals</p> <p>Missouri Foundational Public Health Services Model: -Linkage to medical, behavioral and community resources. -Injury Prevention</p> <p><u>FUNDING STREAMS</u></p> <p>Jefferson Foundation Transformative Grant</p> <p>Missouri DHSS Health Disparities contract</p>	<p>Public Health Capacity; Linkage to medical, behavioral and community resources:</p> <ul style="list-style-type: none"> Identify statewide, regional, and local medical and behavioral healthcare community partners and their capacities. Advocate and seek funding for policies and initiatives that increase access to quality medical and behavioral healthcare. 	<p>ASPEN Coordinator is working directly with current department chief officers to increase staff awareness and education regarding mental health resources and information about ASPEN. Additional departments have reached out to the ASPEN Coordinator to gain information about First Responder resources and ASPEN.</p> <p>Jaclyn has been asked to speak at an event for first responder spouses in July of 2023.</p>

July 6th at 3:12 PM CT

