



1.1 MISSION MOMENT

Car seats and boosters provide protection for infants and children in a crash, yet car crashes are a leading cause of death for children ages 1 to 13. That's why it's so important to choose and use the right car seat correctly every time your child is in the car. According to the National Highway Traffic Safety Administration (NHTSA):

- 325 Children under age 5 were saved by car seats in 2017.ⁱ
- 40% of children killed in car crashes in 2021 were unrestrained.ⁱⁱ
- 46% of car seats and booster seats are used incorrectly.

The NHTSA website has information on finding the right car seat, installing your car seat correctly and keeping your child safe in a car seat: <https://www.nhtsa.gov/equipment/car-seats-and-booster-seats#find-the-right-car-seat-find--compare-seats>

JCHD has trained staff on site to provide car seats and teach correct installation for those who qualify. To learn more about the program or to request a car seat appointment, complete the form at <https://www.jeffcohealth.org/community-health>.

1.2 PROGRESS TOWARD STRATEGIC GOALS

- Community Engagement/Transparency
 - The second 2023 Board of Trustee town hall meeting will be held Thursday, September 14, 2023 at the Hillsboro Civic Center, 10349 Business 21, Hillsboro, MO, United States, Missouri at 6:00 p.m.
 - New Building Town Hall for public on August 9th at 6:00 p.m. Building Committee, Administrative Team and Architectural Firm in attendance. No public attended.
 - Special Meeting of the JCHD Board on August 15th at 3:00 to discuss recommendation for sustainability of ASPEN program. No public attended.
- Data Modernization – JCHD continues to work with local partners to modernize our data sharing and interoperability systems. Prior to the pandemic, close to “real time” data sharing was limited in scope and/or non-existent. The professional need for timely data in conjunction with increased public expectations of access to current data have facilitated a large-scale movement within the health field to formalize data integration strategies and agreements. Items included in this effort will include data sharing agreements, cybersecurity, case management and disease surveillance.
- Internal Updates
 - Mobile Wellness Unit follow up: projected accident repair costs in combination with preexisting issues related to the aging condition of the wellness unit outweigh the benefits of repairing the existing van. Program staff request that the current van be sold or traded as part of a plan to update the unit for long term program sustainability.

Wellness Team activities continue but have been modified to adjust to the limitations of the smaller transit vans and use of off-site locations until a new unit can be acquired. An initial grant in the amount of \$250,000 has been submitted for a grant decision later this fall. An additional \$200,000 toward the anticipated total of \$450,000 for a new vehicle has been requested of the State's ELC expansion grant for approval. The van played a vital role in the pandemic response initially serving as a testing site, transitioning to vaccine administration and treatment.

- Staff Recruitment follow-up: The agency continues to struggle with filling clinical and non-clinical roles. Recruitment and interviews have been on-going, but candidates are not showing up for interviews or do not meet minimum training requirements. The main reason cited for not accepting interviews has been offered salary is lower than market rate. Two immediate impacts on our services this month include:
 - Scheduled overtime for Office Support and Public Health Nursing staff in order to cover back to school immunization schedule during August.
 - The adult dental program has stopped taking new patients onto the waiting list effective immediately. The dental program has been stretched to meet the needs of adult patients and youth during the summer months due to staff shortages. Schools are starting in August, which begins our school youth dental rotations. The hold on the adult waitlist is to ensure adults currently receiving treatment are able to complete their care plans, while program staff transition back to primary care of youth during the school year.

A compensation study is planned in the coming quarter to evaluate the salaried and hourly market rates for all JCHD positions and to determine a salary schedule for moving forward to recruit and retain qualified staff.

- Mid-Year Health Benefit Review: Executive Team staff met with Blue Chip Consortium, our current insurance brokers, for a mid-year review of insurance benefits. No major concerns were cited by JCHD with current providers and services. Brokers cite an anticipated 8-12% inflation for agency insurance costs this year with a preliminary number of 10%. Other (optional, not paid by JCHD) potential benefits including short- and long-term disability plans, pet insurance and financial planning were discussed for review during the fall market bids.

- **External Updates**

- JCHD continues to monitor the on-going local and national litigation regarding opioids. JCHD voted in August 2021 to join with County of Jefferson's suit. The County legal team has been talking with Optum and Express Scripts, but no further updates are available at this time. The pharmacies and Teva have accepted a settlement and are working through the administration process. Payments are not anticipated to begin until next year. The CVS settlement was paid to the County last week. The County is waiting for the 3rd payment from the distributors and J and J settlement. The Purdue payment is on hold while the case is under review by the Supreme Court.

1.3 STATUTORY AND REGULATORY COMPLIANCE UPDATES

- HIPAA Security Risk Analysis Planning Team Meeting July 18, 2023. Administrative team met to review draft HIPAA Security Policy Manual and HIPAA Privacy Policy manual documents. Goal of updated draft policies by end of third quarter 2023.

1.4 ED PUBLIC RELATIONS ACTIVITIES

- Hillsboro Rotary Club
- Compass/COMTREA/JCHD Dental Collaboration
- PHEARLESS Community Leadership Application
- Get Healthy DeSoto Board of Directors
- Mental Health Summit
- MODSS Foster Care Round Table with Director Missey
- Missouri Center for Public Health Excellence
- Jefferson County Community Partnership Board
- Jefferson County Fair, Hillsboro Civic Center
- Washington University, Institute for Clinical and Translational Sciences, Community Advisory Board
- Missouri Coalition for Oral Health
- St. Louis Pandemic Task Force

1.5 PUBLIC HEALTH SECTOR NEWS

- ***Missouri Supreme Court Rules Counties Permitted To Intervene In Action Nullifying Public Health Rules*** (Jane Drummond, MHA newsletter 8/16/23) The Missouri Supreme Court ruled that Jackson and St. Louis counties were impermissibly denied the right to appeal a circuit court decision nullifying certain public health regulations. In the original case, plaintiffs challenged DHSS' rules delegating authority to county public health agencies to enforce infectious disease rules. The trial court entered judgement for the plaintiffs. After Attorney General Schmitt announced he would not appeal on behalf of the department, the counties sought to intervene for the purpose of appealing the decision. The circuit court denied their motion. The case was ultimately transferred to the Supreme Court, which ruled that the counties' intervention was timely, despite being filed after the judgment was issued. The case was remanded so that the counties could pursue a substantive appeal. Full copy of Supreme Court ruling attached or can be found here: https://www.mhanet.com/mhaimages/SupremeCourtRuling_81623.pdf
- ***Report finds county in state's top 10 for overdose mortality count, inpatient overdose rates*** (Leader Publications, Teresa Inserra, 8/15/23) "The Midwest High Intensity Trafficking Area recently released its 2023 Overdose Report for Missouri, and it lists Jefferson County as the fourth highest in Missouri for overdose mortality count regardless of drug type, from 2017-2021, and the sixth highest for inpatient (nonfatal) overdose rates from 2017 to 2020." Full article attached or at: https://www.myleaderpaper.com/news/jefferson-county-makes-statewide-overdose-list-top-10/article_548ffd16-3858-11ee-ac53-7ff5ab551757.html

1.6 ITEMS OF INFORMATION:

- Resolution of Windstream dispute regarding Early Termination Fees (ETF) for High Ridge Office closure. Initial ETF charge to JCHD \$96,682. Amount disputed and final outcome balance of \$23,196.31 to be paid on July 2023 invoice. *Savings to JCHD - \$73,485.69.*
- JCHD received a refund of \$1,909.33 from the County of Jefferson for overpayment of April 4, 2023 election costs. JCHD's portion of the total April election costs was \$125,800.67 for the Board of Trustees election. An initial deposit of \$127,710 was required prior to the election. The agency anticipates another election for Trustees in 2024, so a similar amount of funding will be allocated in FY2024 budget.
- JCHD ED will present with Jaci McReynolds at plenary session of the Missouri State Public Health Conference in September regarding JCHD's integration of the State's Foundational Public Health Model.

1.7 AGENCY RECOGNITION AND OPPORTUNITIES FOR BOARD ENGAGEMENT

- Fifth Annual Jefferson County Rotary Clubs Benefit Golf Tournament, Friday, October 13, 2023 at Crystal Highlands Golf Club. We are looking for sponsors, teams and silent auction baskets. For more information visit: www.jeffcorotary.org. Proceeds support low cost and no cost healthcare services from JCHD's Mobile Wellness Team.

1.8 ELECTRONIC ATTACHMENTS (FOR REFERENCE. NOT INCLUDED IN PRINTED PACKET DUE TO DUPLICATION COSTS):

- Supreme Court Ruling on Appeal from the Circuit Court of Cole County
- *Report Finds County in State's Top 10 for Overdose Mortality Count, Inpatient Overdose Rates*

ⁱ National Center for Statistics and Analysis. (2019, March). Lives saved in 2017 by restraint use and minimum-drinking-age laws (Traffic Safety Facts Crash•Stats. Report No. DOT HS 812 683). Washington, DC: National Highway Traffic Safety Administration.

ⁱⁱ National Center for Statistics and Analysis. (2023, May). Children: 2021 data (Traffic Safety Facts. Report No. DOT HS 813 456). National Highway Traffic Safety Administration

Health Communications Board Report- August 2023

(Analytics from July 2023)

1 Jefferson County Health & Education Fair: Largest back to school fair in the county with several community organizations coming together. We had multiple programs and services attend including: mobile wellness, dental, Teen Coalition, lead education, JCDPC, and CYSHCN. 245 families were served and 568 children were provided school supplies at the fair.

Foundational Areas: Chronic Disease Prevention, Injury Prevention, Linkage to Resources, Maternal, Child, & Family Health, Environmental Public Health

Foundational Capabilities: Communications, Community Partnership Development, Assessment & Surveillance

2 Overdose Data to Action Funding: Members of the team drafted a proposed workplan and budget for OD2A funding. Proposed workplan activities include continuing harm reduction strategies including naloxone distribution and education, and continuing community collaboration through the coalition work.

Foundational Areas: Chronic Disease Prevention, Injury Prevention, Maternal, Child, & Family Health, Linkage to Resources

Foundational Capabilities: Communications, Community Partnership Development, Assessment & Surveillance

3 Smoothie Bike & Nutrition Events: Provided nutrition education and smoothie bike taste tests at 4 different community events: Cedar Hill Farmer's Market, Rockport Early Childhood, Clayton Early Childhood, and Festus Library Summer Family Night. 134 smoothies total

Foundational Areas: Chronic Disease Prevention, Maternal, Child, & Family Health, Linkage to Resources

Foundational Capabilities: Communications, Community Partnership Development

4 Teen Coalition Vaping Campaign: Assisted the teen coalition members with creating their 'Ditch the Vape' campaign videos. Teens determined their messaging, wrote their scripts, and shot their own video clips. We edited the clips and created 3 different videos to run in the community over the next two months.

Foundational Areas: Maternal, Child, & Family Health, Injury Prevention, Chronic Disease Prevention, Linkage to Resources

Foundational Capabilities: Communications, Community Partnership Development

Projects (continued)

5 PERKS Employee Engagement Committee: Completed the June employee wellness challenge survey and summary. Drafted and finalized the September employee wellness challenge based on evidence based practices.

Foundational Areas: Linkage to Resources, Maternal, Child, & Family Health

Foundational Capabilities: Communications, Community Partnership Development, Assessment & Surveillance, Policy Development and Support,

6 Community Engagement: Attended numerous community events and meetings including: Family Violence Council Meeting, Jefferson County Mental Health Summit, Jefferson County Drug Prevention Coalition, and Jefferson County Homelessness Coalition. Assistance in planning Jefferson County Drug Education Conference and Homelessness Coalition strategic planning. Planned the next Homeless & Essential Needs Outreach event in August working with community partners to bring needed services and resources.

Foundational Areas: Communicable Disease Prevention, Chronic Disease Prevention, Injury Prevention, Linkage to Resources, Maternal, Child, & family Health, Environmental Public Health

Foundational Capabilities: Communications, Community Partnership Development, Emergency Preparedness & Response

7 Workforce Development: Managed recruiting, interviewing, and onboarding process for new employees. Planning for September Professional Development Day. Organizing staff trainings and employee licensure tracking. Drafting agency Workforce Development plan and core competency staff assessment.

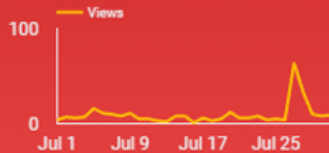
Foundational Capabilities: Communications, Community Partnership Development, Organizational Administrative Competencies, Accountability & Performance Management, Assessment and Surveillance, Policy Development & Support

Social Media Analytics

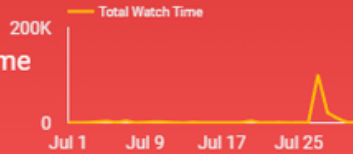
Trending by Views, Watch Time, & Shares

Shares

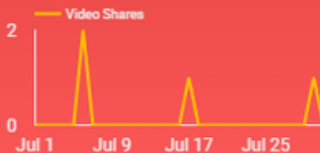
▶ Views
295.0



🕒 Avg Watch Time
09:00



🔗 Video Shares
4.0



Top Videos Watched

Video Title

Title	Views
JCHD Board Meeting 7.27.23	84
Jeffco Mindfulness Trail: Meditation	55
How to Wash Your Hands- Using Glo Ger...	28
What is ASPEN? (Accessing Services Prov...	26
JCHD Board Town Hall: June 15, 2023	20
JCHD Board Meeting 6.23.23	14
It's Fine Series: What Does a 1st Therapy...	8
It's Fine Series: Overcoming Obstacles &...	5
JCHD Board Part 2	4
Jefferson County Wellness Walk: Jumpin...	4

📘 Fans

17K
fans

📉 8 from 17K

📘 Received PMs

9
PMs

📉 1 from 10

📘 Page engagement rate

1.26%
engagement rate

📉 1.16 from 2.41%

📘 Post engagement rate

1.07%
engagement rate

📉 1.39 from 2.47%

📍 Followers

1.5K
followers

0 from 1.5K

📍 Inbound messages

2
messages

📉 2 from 4

📍 Post engagement rate

5.82%
engagement rate

📈 1.59 from 4.23%

📍 Post engagement

12
engagements

📉 30 from 42

📍 Followers

1.7K
followers

📉 5 from 1.7K

📍 Inbound messages

2
messages

📉 4 from 6

📍 Post engagement rate

0%
engagement rate

📉 2.7 from 2.7%

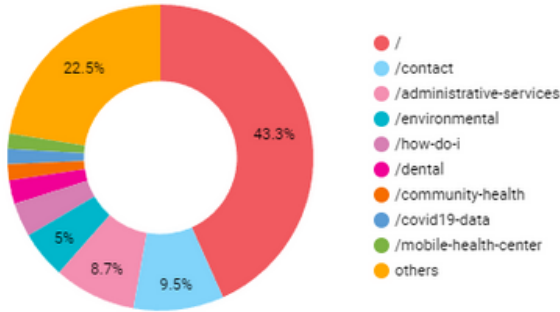
📍 Post engagements

0
engagements

📉 1 from 1

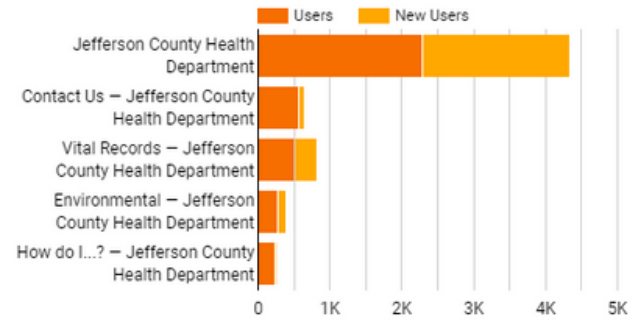
Website Analytics

Which page is the most popular?



Page	Pageviews
1. /	10,567
2. /contact	2,327
3. /administrative-services	2,119
4. /environmental	1,224
5. /how-do-i	877
6. /dental	612
7. /community-health	414
8. /covid19-data	393
9. /mobile-health-center	390
10. /nursing	366

Most popular pages with title breakdown

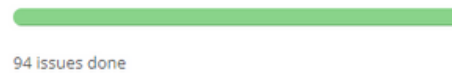


Page Title	Keyword	Pageviews
1. Jefferson County He...	(not provided)	5,740
2. Jefferson County He...	(not set)	4,983
3. Vital Records – Jeff...	(not provided)	1,627
4. Contact Us – Jeffers...	(not provided)	1,578
5. Environmental – Jeff...	(not provided)	874
6. Contact Us – Jeffers...	(not set)	751
7. How do I...? – Jeffer...	(not provided)	614
8. Vital Records – Jeff...	(not set)	495
9. Dental – Jefferson C...	(not provided)	414
10. Environmental – Jeff...	(not set)	365

Query	Impressions	Clicks
hepatitis a symptoms	18,377	6
jefferson county health department	7,328	400
hep a symptoms	2,604	0
aspen jefferson county	1,602	5
syphilis treatment	1,028	0
use of folic acid	786	0
symptoms of hepatitis a	716	0
jefferson county department of health	581	9
jefferson county mo	580	2
jchd	546	13
hepatitis symptoms	502	0

A Level A Compliance

Issues (149,248 issues affecting 504 pages)



- 5 Errors
- 3 Warnings
- 37 Needs review

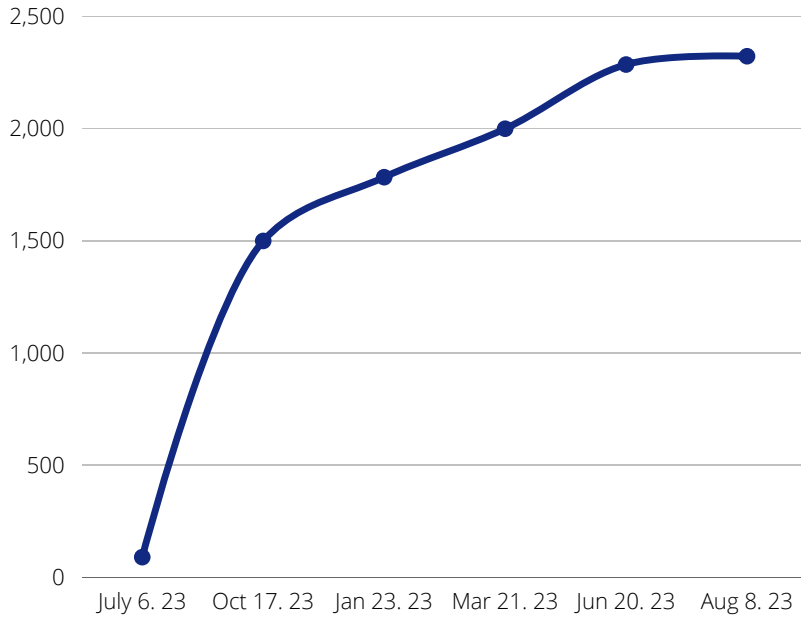
AA Level AA Compliance

Issues (125,437 issues affecting 504 pages)



- 2 Errors
- 1 Warnings
- 22 Needs review

JCHD Mobile App Analytics



**2,322
DOWNLOADS**

**1 PUSH
NOTIFICATIONS**

Google Business Profile Analytics

Hillsboro Office: 904 Interactions

582
calls
+13%

6
messages
+100%

219
people asked for
directions
+18%

217
website visits from
profile
+12%

2,961
profile views
+10%

1,615
searches
+14%

Arnold Office: 1,246 Interactions

650
calls
+8%

11
messages
+450%

252
people asked for
directions
-19%

390
website visits from
profile
+12%

4,005
profile views
+9%

2,104
searches
+11%



Jefferson County Health Department will champion positive health outcomes and behaviors through innovative programs and community engagement.

Community Services Board Report- August 2023 (Analytics and Updates from July 2023)

The Community Services Department consists of our Communicable Disease Prevention Team, Environmental Public Health Team, Public Health Preparedness Planner and the Special Healthcare Needs Team. This team manages the non-clinical public health programs.

Foundation of Public Health Module Areas of Capability and Expertise:

Communicable Disease Prevention: (condensed press release)

August 07, 2023

Possible measles exposure in the greater St. Louis area

JEFFERSON CITY, MO - The Missouri Department of Health and Senior Services, the St. Louis County Department of Public Health, and the St. Charles County Department of Public Health have been notified of an internationally-imported confirmed case of measles. The departments are waiting for the completion of tests to determine the strain of disease from the Centers for Disease Control and Prevention.

Public health officials from all three agencies are working to notify individuals who may have been exposed to measles. Today's public notification is intended to alert the public so all are aware of the symptoms of measles, and know to reach out to their physician if symptoms, specifically a rash, is experienced. Rashes usually begin as flat red spots that appear on the face at the hairline and spread downward to the neck, trunk, arms, legs and feet.

People who may have been exposed to measles should contact their health care provider if they develop cold-like symptoms with a fever and/or rash as described. Those who have been exposed to measles and have symptoms, you should NOT go to any health care facility without calling first.

In an effort to protect the health and safety of their customers, the following locations below are being fully cooperative in identifying individuals who may have been exposed.

Measles is a highly-contagious, acute viral illness that is transmitted by contact with an infected person through coughing and sneezing. Patients are considered to be contagious from four days before until four days after the rash appears. The measles virus can remain infectious in the air for up to two hours after an infected person leaves an area. Measles is a vaccine-preventable disease. Individuals can check with their health care provider to make sure you and your family are up-to-date on vaccines.

The symptoms of measles generally include a rash that appears 7-21 days after exposure. Measles typically begins with:

A high fever, Cough, Runny nose, Red, watery eyes

Three to five days after symptoms begin, a rash starts to appear.

It is strongly suggested that health care providers have patients isolate who are suspected of having measles and immediately report suspected cases to the local public health agency or to DHSS at (573) 751-6113 or (800) 392-0272 outside normal business hours. For more information about measles go to <https://www.cdc.gov/measles/index.html>.

Residents with questions should contact their local health department. St. Louis County residents may discuss their immunization status and request a measles immunity test by calling the St. Louis Department of Public Health at 314-615-1630 during regular business hours and 314-615-7677 after business hours.

To contact the St. Charles County Department of Public Health, call (636) 949-7319.

<https://health.mo.gov/news/newsitem/uuid/e86f3ef4-ede7-404d-a474-7022afaaefe3/possible-measles-exposure-in-the-greater-st-louis-area>

Mission: Capacity to prevent and stop the spread of disease through strategies such as surveillance, investigation, education, and interventions.

Programs: Communicable Disease Investigation, Vector Control, Animal Bite Investigations

Funding Sources: Public Health Emergency Preparedness (PHEP) MO DHSS Contract, Epidemiological and Laboratory Capacity Enhancing Detection Expansion (ELC-EXP) MO DHSS Contract.

Communicable Disease Surveillance Summary Report

Communicable Disease Surveillance Summary Report - July 2023

Jefferson County, Missouri

Notes on the Data:

- All data and information are conditional and may change as more reports are received.
- Case definitions are established by the Missouri Department of Health and Senior Services' (DHSS) Communicable Disease Investigation Reference Manual. The totals reflect the number of confirmed and probable cases reported; suspect cases are not included.
- Data is reported in epidemiologic weeks established by the CDC's Morbidity and Mortality Weekly Report (MMWR). The MMWR week starts on a Sunday and ends on Saturday. Values for MMWR week range from 1 to 53, although most years consist of 52 weeks. The 2023 MMWR calendar began on January 1, 2023.
- Case date may be based on the onset date, diagnosis date, specimen date, or test date.
- Excluded from this report are Sexually Transmitted Diseases, Influenza, and COVID-19.
- Jefferson County Health Department monitors all reportable disease cases year-round. Figures 1. and 2. include detailed views of diseases or conditions that may be of importance during the time of year this report is published. Variables such as outbreaks or the seasonality of communicable diseases may affect the number of cases per month and call for a more in-depth look. Seasonal change in the incidence of infectious diseases is common.

Additional Sources of Information:

Jefferson County Health Department's Covid-19 Data Dashboard <https://www.jeffcohealth.org/covid19-data>
 Jefferson County Health Department's Influenza Data Dashboard <https://www.jeffcohealth.org/flu-season-info>
 Missouri Department of Health and Senior Services, Communicable Disease Investigation Reference Manual: <https://health.mo.gov/living/healthcondiseases/communicable/communicabledisease/cdmanual/index.php>

Table 1. Number of Enteric Cases by Month, Jefferson County, Missouri

Disease or Condition	Five Previous Months					Year to Date Comparison		
	March 2023	April 2023	May 2023	June 2023	July 2023	YTD 2023	YTD 5 Previous Year Mean	YTD Alert ¹
Campylobacteriosis	3	6	3	2	6	22	16.2	*
Cryptosporidiosis	0	0	0	0	0	0	1.8	
Cyclosporiasis	0	0	0	0	2	2	2.4	
E. Coli O157:H7	0	0	0	0	0	0	0.8	
E. Coli Shiga Toxin +	0	0	0	0	0	0	0	
Giardiasis	0	0	0	0	0	0	0.4	
Hepatitis A Acute	0	0	0	0	0	0	3.2	
Listeriosis	0	0	0	0	0	0	0.2	
Salmonellosis	3	1	8	2	2	18	15	*
Shigellosis	0	0	0	0	1	1	0.4	
Yersiniosis	1	0	0	0	0	1	1.8	
Enteric Totals	7	7	11	4	11	44	42.2	

Table 2. Number of Respiratory and Systemic Disease Cases by Month, Jefferson County, Missouri

Disease or Condition	Five Previous Months					Year to Date Comparison		
	March 2023	April 2023	May 2023	June 2023	July 2023	YTD 2023	YTD 5 Previous Year Mean	YTD Alert
Coccidioidomycosis	0	0	0	0	0	0	0	
Haemophilus Influenzae, Invasive	1	0	0	0	0	3	3.4	
Legionellosis	0	0	0	0	0	0	1.8	
Measles	0	0	0	0	0	0	0.2	
Pertussis	1	0	0	0	0	1	10.4	
Staph Aureus, VISA	0	0	0	0	0	0	1.4	
Streptococcus Pneumoniae, Invasive	3	0	1	0	0	10	17	
Streptococcal Toxic Shock Syndrome	0	0	1	0	0	1	0.2	
Varicella	0	0	0	0	0	2	1.6	
Respiratory and Systemic Totals	5	0	2	0	0	17	36	

Table 3. Number of Vector-Borne Cases by Month, Jefferson County, Missouri

Disease or Condition	Five Previous Months					Year to Date Comparison		
	March 2023	April 2023	May 2023	June 2023	July 2023	YTD 2023	YTD 5 Previous Year Mean	YTD Alert
Anaplasma Phagocytophilum	0	0	0	0	0	0	0	
Babesiosis	0	0	0	0	0	0	0.2	
Ehrlichia Chaffeensis	0	1	1	7	4	13	15.2	
Ehrlichia Ewingii	0	0	0	0	0	0	0.6	
Ehrlichiosis Anaplasmosis Undetermined	0	0	1	0	0	1	1	
Lyme	0	0	0	0	0	0	0	
Rocky Mountain Spotted Fever	0	0	0	2	1	3	5.4	
Tularemia	0	0	0	0	0	0	0	
Vector-Borne Totals	0	1	2	9	5	17	22.4	

Table 4. Number of Other/Miscellaneous Cases by Month, Jefferson County, Missouri

Disease or Condition	Five Previous Months					Year to Date Comparison		
	March 2023	April 2023	May 2023	June 2023	July 2023	YTD 2023	YTD 5 Previous Year Mean	YTD Alert
Animal Bites	18	24	22	12	11	132	92.8	*
MOTT	6	2	1	4	2	17	13	*
Rabies Animal	0	0	0	0	0	0	0.4	
Rabies Post Exposure Prophylaxis	2	2	5	0	0	11	4.8	*
TB Disease	0	0	0	0	0	0	0.6	
TB Infection	1	2	3	3	3	15	26	
Other/Miscellaneous Totals	27	30	31	19	16	175	137.6	

Figure 1. Campylobacteriosis

Jefferson County, Missouri

Campylobacter infection, or campylobacteriosis, is caused by Campylobacter bacteria. Campylobacteriosis is one of the most common causes of diarrheal illness in the United States. There are 21 Campylobacter species; however, Campylobacter jejuni and Campylobacter coli are the two species that most often infect humans. Almost all persons infected with Campylobacter recover without any specific treatment. Antimicrobial therapy is warranted only for patients with severe disease or those at high risk for severe disease, such as those with immune systems severely weakened from medications or other illnesses. There were 6 cases of Campylobacteriosis reported during July 2023 in Jefferson County. During the previous 5 years, the number of cases has ranged from 0 to 8 per month. A year-to-date alert has been noted for Campylobacteriosis. Year-to-date alerts are present when the total cases in the current year are more than one standard deviation above the mean for the same time period in the previous five years.

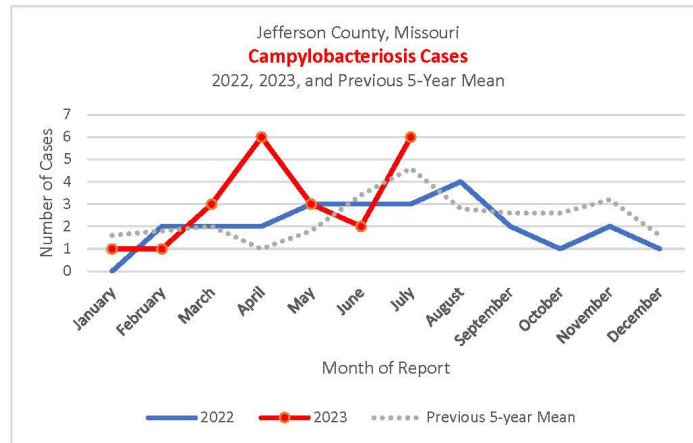
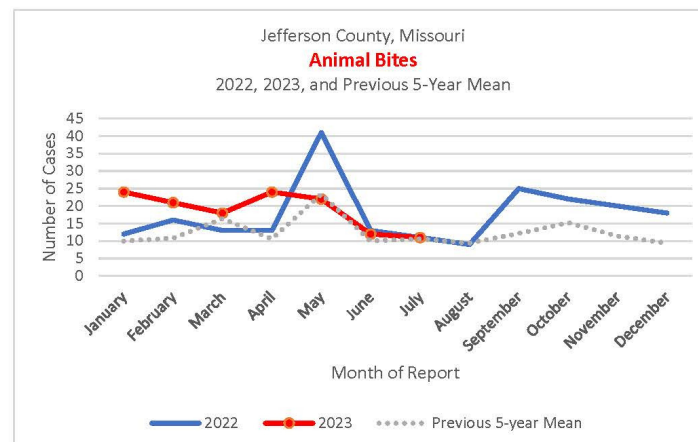


Figure 2. Animal Bites

Jefferson County, Missouri

The potential for zoonotic (animal-to-human) transmission of disease must be considered in any situation where a person is injured by an animal. Animal bites are a major mechanism of pathogen conveyance. In considering the likelihood of disease transmission, many factors must be assessed, such as the species of animal, type of injury, severity of injury, vaccination status of animal and/or human (when applicable), time between incident and treatment, and various attributes of the injured person (age, underlying health, etc.). An "Animal bite wound" is defined as breaking of the skin by the teeth of an animal. Only bites from mammals are reportable in the state of Missouri.

There were 11 animal bites reported during July 2023 in Jefferson County. During the previous 5 years, the number of reported animal bites has ranged from 0 to 41 per month. A year-to-date alert has been noted for Animal Bites. Year-to-date alerts are present when the total cases in the current year are more than one standard deviation above the mean for the same time period in the previous five years.



Environmental Public Health

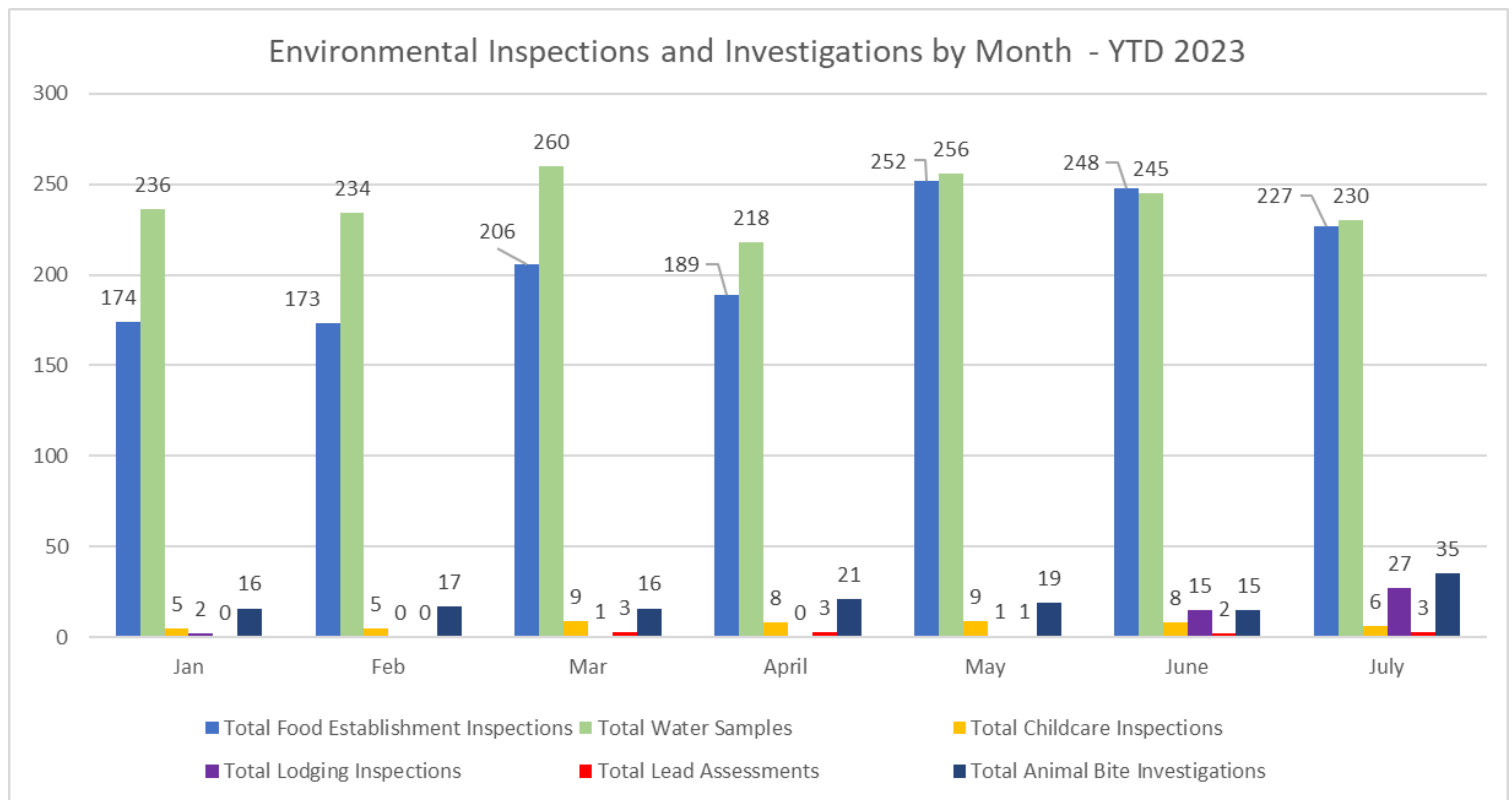
Environmental Public Health:

- Staff attended the Jefferson County Fair in Hillsboro, MO, conducting temporary food permit inspections.
- Staff provided information on the risks of lead poisoning, opportunities for in-home lead risk-assessments as well as lead testing at the Back-To-School fair in Hillsboro, MO and the Festus Library Family Fun Night.
- 2 staff attended the National Environmental Health Association (NEHA) 86th Annual Education Conference and Exhibition in New Orleans, LA. This was funded by a U.S. Food and Drug Administration (FDA) grant.

Mission: Capacity to reduce harmful exposures and foster safe and health environments that protect communities.

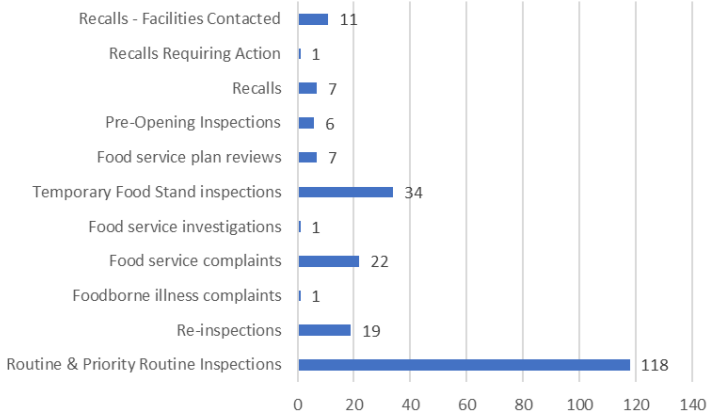
Programs: Food Program (Jefferson County Food Code, Food and beverages Permits, Temporary Permits, Farmers Market Master Training, and ServSafe Certifications), Water Sample Laboratory Services (Private and Public Water and Wells), Childcare Sanitation Inspections (CCSI), Lead Assessment and Education, and Lodging.

Funding Sources: Childcare Sanitation Inspections (CCSI) MO DHSS Contract, Summer Food Services Program (SFSP) MO DHSS Contract, Children's Health Insurance Program (CHIP) Health Services Initiative (HSI)-LEAD MO DHSS Contract, CORE MO DHSS Contract, Superfund Lead Health Education and Voluntary Institutional Control Program (VICP) MO DHSS contract, Environmental Implementation of Grading System and Advancement on Conformance with Program Standards (GSAC) FDA contract

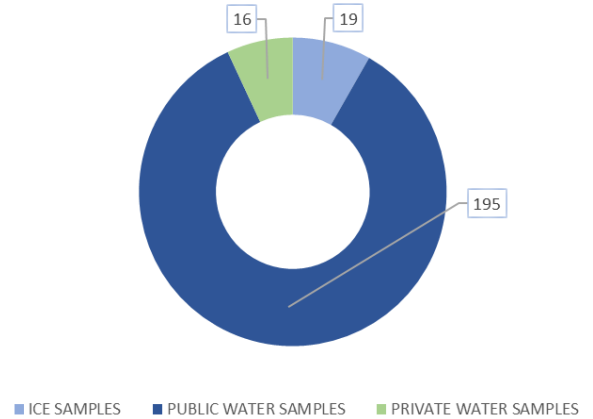


Environmental Public Health

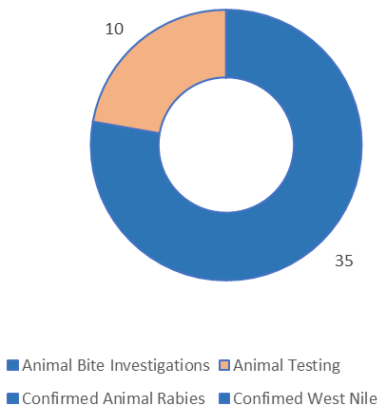
Total Food Establishment Inspections - July 2023



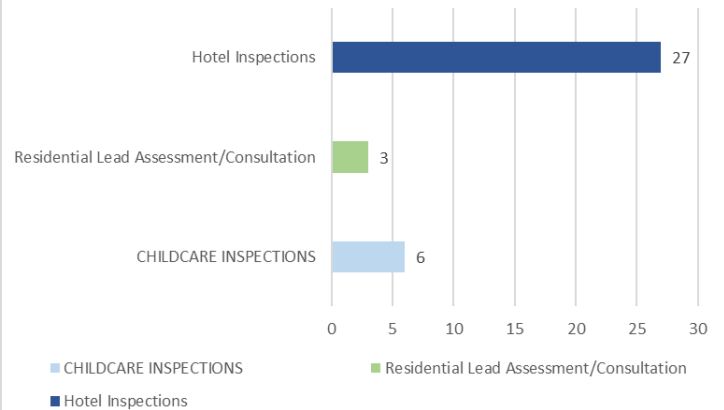
Total Ice and Water Samples Tested - July 2023



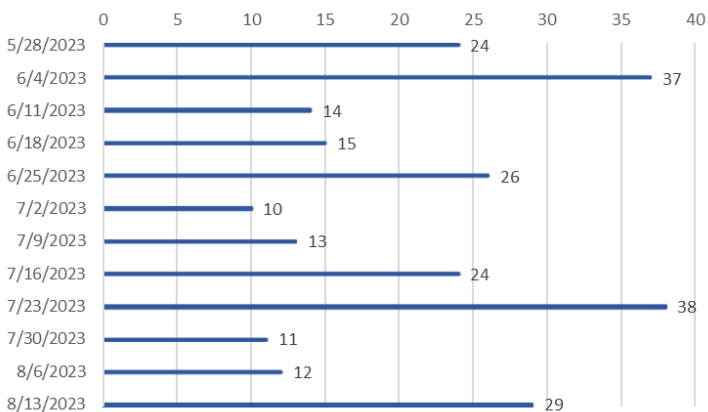
Total Animal Bite Investigations - July 2023



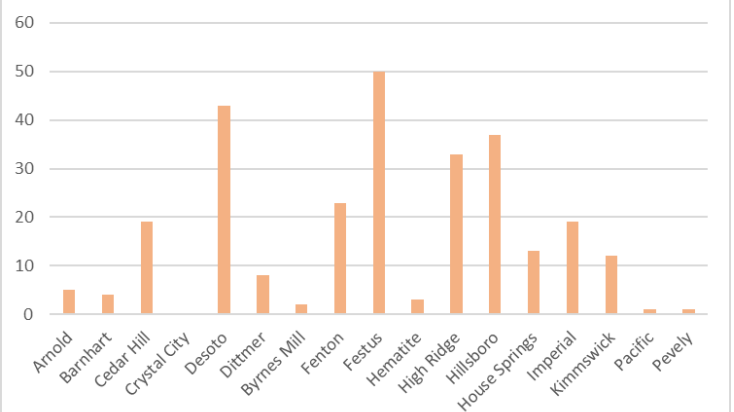
Total Additional Inspections - July 2023



Completed Mosquito Spray Requests by Week - YTD 2023



Mosquito Spray Requests by City - YTD 2023



Public Health Preparedness and Special Healthcare Needs

Public Health Preparedness (PHP) - Emergency Preparedness and Response:

- The July focus for the preparedness planner was training and building community partnerships. This included:
 - Participating in the Mental Health Summit in Festus, MO and the Resiliency Summit in Jefferson City, MO.
 - Meeting with Jefferson County Office of Emergency Management
 - Homeland Security Threat Evaluation at St. Louis County Emergency Operations Center
 - Helping to transition the Project Lifesaver program to JCHD's community clinic team.

Mission: Capacity to promote ongoing community resilience and preparedness, issue and enforce public health orders, share information with key partners and the general public, and lead the health and medical response to emergencies

Programs: Public Health Preparedness Planning and Response, Training and Exercises, and Project Public Health Ready (PPHR) Accreditation

Funding Sources: Public Health Emergency Preparedness (PHEP) MO DHSS Contract, Cities Readiness Initiative (CRI) MO DHSS Contract, Epidemiological and Laboratory Capacity Enhancing Detection Expansion (ELC-EXP) MO DHSS Contract.

Linkage to Medical, Behavioral, and Community Resources: Examples of resource navigation and case management provided to participants for both programs in the month of July:

- Assisted families with resources for food pantries, diapers, financial assistance, housing assistance, utility assistance, and school supplies.
- Staff provided training to regional coordinators to access Missouri Brain Injury Resource Facilitation (MOBIRF) and interacted with approximately 150 individuals at the Back-to-School Fair in Hillsboro, MO
- Highlighted Positive Outcome (generalized for participant privacy):
 - A current participant began playing wheelchair tennis and has been asked to play in area tournaments. This was achieved through encouragement from adjustment counseling, which is a service provided by this program.
 - Participant began GED classes with the assistance of Special Instruction Services.

JCHD contracts with MO Department of Health and Senior Services (MO DHSS) to provide resource navigation to connect participants to providers. MO DHSS reimburses providers for services and JCHD for staffing expenses through the ABI and CYSHCN contracts. No JCHD funds are utilized for this program.

Mission: Capacity to develop a strong network of partners with diverse expertise and resources to build a strong foundation for community health.

Programs: Adult Brain Injury and Children and Youth with Special Healthcare Needs Service Coordination and Public Health Preparedness inclusion planning

Funding Sources: Adult Brain Injury Program Service Coordination (ABI) Missouri Regions F and G, Children and Youth with Special Healthcare Needs Service Coordination (CYSHCN) Missouri Regions 10 and 11, and Epidemiological and Laboratory Capacity Enhancing Detection Expansion (ELC-EXP) MO DHSS Contract



Jefferson County Health Department will champion positive health outcomes and behaviors through innovative programs and community engagement.

JULY CLINICAL BOARD REPORT

Month Reporting: July 2023

Date: 08/21/23

Reported By: M. Melissa Parmeley, Clinical Services Manager

CLINICAL SECTION - PROGRAMS <i>FPHS</i>	CONTRACT/ GRANT	MONTHLY UPDATE
FAMILY PLANNING - Title X - The Right Time - Show Me Healthy Women - Wise Woman <i>Maternal, Child & Family Health</i> <i>Communicable Disease</i> <i>Access to Care</i>	Title X; The Right Time (TRT) Show Me Healthy Women (SMHW) Wise Woman (WW)	<p>Staff attended the Back-to-School Fair event at Jefferson College on July 27th. The following information was provided at this event:</p> <ul style="list-style-type: none"> • The Right Time Initiative (28 distributed) • Show Me Health Women (8 distributed) • Reproductive Health (15 distributed) <p>Title X requires a Cost Analysis to be completed at specified intervals by the Missouri Family Health Council (MFHC). JCHD is currently working through a cost analysis of this program that is due on August 31st.</p> <p>The Family Planning Program continues to have an opening for an Education and Outreach RN that serves to operate within the clinic and provide community outreach on The Right Time Initiative.</p> <p>Nurse Practitioner Kate Wagner and Family Planning RN Emily Speilbauer will provide an education presentation on Title X, Family Planning, The Right Time Initiative, and services available at JCHD.</p>

Jefferson County Health Department
405 Main Street, Hillsboro, MO 63050
Phone: 636-797-3737 Fax: 636-797-4631
www.jeffcohealth.org

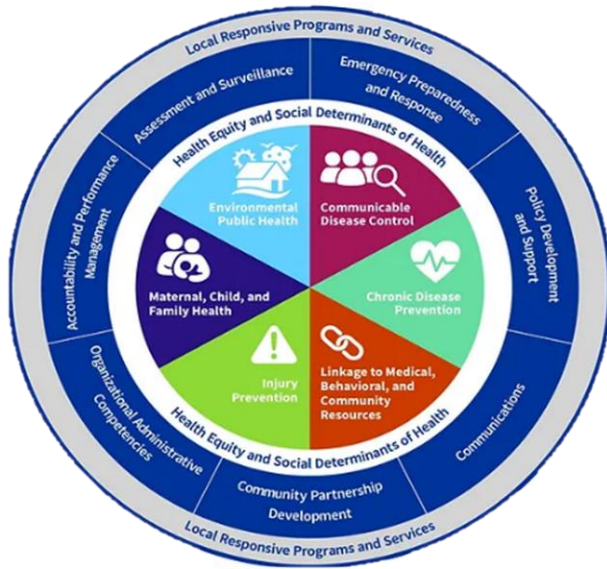
<p>GENERAL CLINIC</p> <ul style="list-style-type: none"> - Immunizations - Tuberculosis (TB) - Lead - Wellness Labs - Sexually Transmitted Diseases (STD/STI) - Perinatal Hepatitis B - Child Care Health Consultation (CCHC) <p><i>Maternal, Child & Family Health</i> <i>Communicable Disease</i> <i>Access to Care</i> <i>Injury Prevention</i></p>	<p>Vaccines for Children (VFC/317) Adult Immunization Contract (AIG) EPA Superfund Lead Health Education CHIP CORE Public Health Program Support 23-24</p>	<p>The JCHD Immunization Program continues to have an open RN position posted. With the volume of appointments and community clinics in July and August, this has been an extreme stretch for staff to meet the current clinical demands for vaccines.</p> <p>The TB program case management included the following in July:</p> <ul style="list-style-type: none"> Active TB Direct Observation Therapy: 1 Latent TB Direct Observation Therapy Cases: 2 Latent TB Investigations: 5 Potential new cases: 14 Closed Cases: 6 Contact investigations: 1 <p>Members of the JCHD Lead team attended the EPA Public Meeting for Jefferson County held on July 11th. This Public Meeting was scheduled by the EPA to seek public input on the proposed plan to address lead and other heavy metals in private, domestic drinking water wells at residential properties, including childcare facilities, County Mining Sites, which includes all of Jefferson County. With the current JCHD Cooperative Agreement for the Jefferson County Superfund site, JCHD provides education and screening on the topic of lead within the county. At this event JCHD provided 9 lead Point of Care tests, education, and access agreements to those in attendance.</p> <p>On 07/18/23, JCHD Nursing staff attended a Hepatitis C educational presentation to expand current knowledge on this disease.</p>
<p>COMMUNITY CLINIC</p> <ul style="list-style-type: none"> - Mobile Wellness - Communicable Disease Testing - Prevention - Community Clinics - Project Life Saver 	<p>Local Public Health Disparities; Program Support 23-24 ELC; AIG Missouri Mini Grant Prevent Ed</p>	<p>The JCHD Mobile Wellness Program was in the community for a total of 7 days in July (due to the Provider being on PTO during this month). The program saw 49 patients in July and provided services that included labs, well visits, sick visits, chronic disease management and physicals. The 49 patients seen included 14 new patients.</p>



Jefferson County Health Department will champion positive health outcomes and behaviors through innovative programs and community engagement.

<p><i>Maternal, Child & Family Health</i> <i>Communicable Disease</i> <i>Access to Care</i> <i>Injury Prevention</i></p>		<p>The Mobile Wellness Team continues to operate out of a sprinter van. Although there is less room in the sprinter van, the team has been coordinating with locations to ensure appropriate space is available for patient needs. Patients that need additional services are being seen at the Hillsboro and Arnold office locations by the team one day/week.</p> <p>A sprinter van was utilized at the Jefferson County Fair on July 21-23 and served as a cooling station for Valle Ambulance. We also provided educational materials and pamphlets about JCHD services at this event. A printer van was also utilized at the Jefferson College Back to School Fair along with staff present inside at the event. Five blood pressure screenings and education were provided at that event on 07/27/23.</p> <p>JCHD provided one homebound vaccine in July through coordination with Aging Ahead.</p> <p>On 07/28/23, a JCHD Nurse attended a Festus Library event and provided educational information and blender bike demonstration.</p>
<p>DENTAL</p> <ul style="list-style-type: none"> - Pediatric Mobile Dental - Sealant - Adult Mobile Dental <p><i>Maternal, Child & Family Health</i> <i>Access to Care</i></p>	<p>Sealant and Tele dentistry CHIP CORE Public Health</p>	<p>The Dental Program has two posted openings for two Dental Assistants. These openings have been posted since 06/29/23 with limited response. Despite these openings, the dental team continued to focus on adults in July and saw 106 patients and completed 413 procedures in July.</p>

Jefferson County Health Department
405 Main Street, Hillsboro, MO 63050
Phone: 636-797-3737 Fax: 636-797-4631
www.jeffcohealth.org



[HealthierMO | Missouri FPHS Model](#)

July 2023 ASPEN Program Report

Presented at the August 24th, 2023

The below tables present the activities and work performed for the month of March 2023 and display the alignment with grants, contracts, and the deliverables which each grant and contract were awarded upon. Such alignment also conforms with the Missouri Foundational Public Health Services Model.

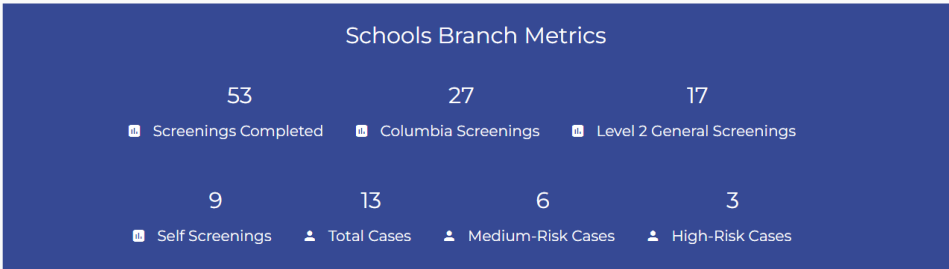
PROGRAM	DELIVERABLE/FOUNDATION CAPABILITY	CURRENT OUTCOMES, IMPACTS & PROGRESS
<p>ASPEN: Community Resource Directory Missouri Foundational Public Health Services Model: -Linkage to medical, behavioral and community resources. -Community Partnership Development</p> <p><u>FUNDING STREAM</u> Jefferson Foundation Transformative Grant</p> <p>Missouri DHSS Health Disparities contract</p>	<p>Public Health Capacity; Linkage to medical, behavioral and community resources:</p> <ul style="list-style-type: none"> • Identify statewide, regional, and local medical and behavioral healthcare community partners and their capacities. • Develop and implement a prioritized plan for increasing access to quality health care. • Support community-based initiatives that increase access to quality medical and behavioral healthcare. • Ability to create and maintain strategic, non-program specific relationships with key community partners. 	<p>ASPEN Program Support Specialist during July focused on updating mental health resources. Updating resources include contacting the provider in order to update phone numbers, staff information, insurance information and sliding fee details (if applicable). Resources are updated on either a quarterly, bi-annual or annual basis depending on the need.</p> <p><u>Current Community and Regional Resources in Public ASPEN Directory:</u> Community Resources: 1,075 School Internal Resources: 9</p>

Resources can be found at the following URL:

<https://bh.ichnetwork.org/public/resource-directory>

PROGRAM	DELIVERABLE/FOUNDATION CAPABILITY	CURRENT OUTCOMES, IMPACTS & PROGRESS
<p>ASPEN: School Behavioral Health Portal</p> <p>Missouri Foundational Public Health Services Model: -Linkage to medical, behavioral and community resources. -Injury Prevention</p> <p><u>FUNDING STREAMS</u></p> <p>Jefferson Foundation Transformative Grant</p> <p>Missouri DHSS Health Disparities contract</p>	<p>Public Health Capacity; Linkage to medical, behavioral and community resources:</p> <ul style="list-style-type: none"> • Provide timely, accurate, and locally relevant education to the community on the behavioral health care system. <p>Injury Prevention:</p> <ul style="list-style-type: none"> • Identify statewide, regional and local injury prevention community partners and their capacities • Work with partners to implement evidence based and populations-based interventions that mitigate suicide risk <p>Foundation Transformative Deliverables:</p> <ul style="list-style-type: none"> • Software updates and administrative maintenance through pilot phases and expansion. • Complete school beta phases and expanding access to a minimum of 8 Jefferson County Schools. • Connect students and families to appropriate resources. • Work with DHSS. Children’s Division and Foster Care throughout the county and state. 	<p>July updates provided by the development team ArchitectNOW and ASPEN staff included the following:</p> <ul style="list-style-type: none"> • Create a school administrator account for school administrators to access deidentified data regarding usage and enrollment. • Add student refactor • Agreement updates to include school names • Update terminology from counselor to staff per. Feedback from users • Testing phases • General maintenance <p>Met with Missouri Suicide Prevention Network on July 6th, 2023</p> <p>ASPEN Coordinator facilitated and presented at the <u>2023 Mental Health Summit on July 17th</u>. There were over 100 school representatives, providers, partners and other key stakeholders in attendance. Missouri Children’s Division Director was the keynote speaker and other speakers discussed important mental health related topics from Jefferson County Juvenile Office, Provident, Chestnut, Compass Health, and an individual who shared their personal story.</p>

School Metrics 8/20/2023



PROGRAM	DELIVERABLE/FOUNDATION CAPABILITY	CURRENT OUTCOMES, IMPACTS & PROGRESS
<p>ASPEN: First Responder and Health Care Worker Portals</p> <p>Missouri Foundational Public Health Services Model: -Linkage to medical, behavioral and community resources. -Injury Prevention</p> <p><u>FUNDING STREAMS</u></p> <p>Jefferson Foundation Transformative Grant</p> <p>Missouri DHSS Health Disparities contract</p>	<p>Public Health Capacity; Linkage to medical, behavioral and community resources:</p> <ul style="list-style-type: none"> Identify statewide, regional, and local medical and behavioral healthcare community partners and their capacities. Advocate and seek funding for policies and initiatives that increase access to quality medical and behavioral healthcare. <p>Foundation Transformative Deliverables:</p> <ul style="list-style-type: none"> Provide screenings and vetted resources for multiple first responder agencies. Identification of needs and connection appropriate services for behavioral health or substance use related needs. 	<p>ASPEN Coordinator was invited to speak at the Revolutionary Fire Tactics at the Lake Fire Conference on July 28th, 2023. Over 35 first responder spouses attended a unique training focused on mental health in the fire service. The ASPEN Coordinator provided information regarding ASPEN and personal stories regarding identifying risk and connecting to appropriate resources.</p> <p>Metrics: Increase of 4 screenings during this time frame since July 2023 BOD meeting.</p>

First Responder and Health Care Metrics 8/20/2023

