

JEFFERSON COUNTY HEALTH DEPARTMENT



ANNUAL REPORT

JANUARY 1, 2008 THROUGH DECEMBER 31, 2008

“Public Health is what we, as a society, do collectively to assure the conditions in which people can be healthy.”

-The Institute of Medicine

Visit our website at: www.jeffcohealth.org



Public Health
Prevent. Promote. Protect.

TABLE OF CONTENTS

	<u>Page</u>
GENERAL INFORMATION.....	4
BUDGET.....	6
BOARD OF TRUSTEES.....	8
TABLE OF ORGANIZATION.....	9
WHAT DOES JCHD DO IN OUR COMMUNITY?.....	10
Vision.....	12
Mission.....	12
Values.....	12
 NURSING SERVICES:	
<u>Clinic Services:</u>	
Communicable Disease Control.....	13
Family Planning Services.....	14
Lead Testing & Follow-up Program.....	14
Immunizations.....	14
Walk-In Clinic.....	15
Pregnancy Testing.....	15
Temporary Medicaid Cards.....	15
Women’s Health.....	16
<u>Community Health Services:</u>	
Get Healthy and Active DeSoto.....	16
Methamphetamine Action Coalition.....	17
Tobacco.....	18
Youth Tobacco Prevention Programs in 2008	18
WIC Education.....	18
Tobacco Newsflash.....	19
Clean Indoor Air Law Compliance.....	19
Freedom From Smoking.....	19
Smoke-Free Teens On Purpose (STOP).....	19
Tobacco Cessation Line.....	19
Information Booths.....	19
Influenza & Wellness.....	20
Arthritis Foundation Exercise Program.....	20
Bike Helmet Program.....	20
Car Seat Program.....	20
Nutrition Education.....	20
Chronic Disease Primary Prevention Program.....	20
Child Fatality Review Panel.....	21
Family Literacy Program.....	21
Jefferson County Cancer Coalition.....	21
Dental Program.....	21

Children with Special Healthcare Needs.....	22
Adult Head Injury Service Coordination.....	22
BIO-TERRORISM & PREPAREDNESS PROGRAM:	
Bio-Terrorism & Preparedness.....	22
ENVIRONMENTAL HEALTH SERVICES:	
Food Handling Establishments.....	24
Pools.....	24
Insect, Rodent & General Complaints.....	24
Animal Bites & Rabies Testing.....	24
Commercial Lodging.....	24
Public & Private Drinking Water.....	25
Educational Classes.....	25
Child Care Centers/Daycares/Group Homes/Nursing Homes..	25
Laboratory Special Testing.....	25
West Nile Virus.....	25
Hematite.....	26
Herculaneum.....	27
Indoor Air.....	27
Sexually Oriented Businesses.....	27
Hazardous Materials Actions.....	28
Miscellaneous Environmental Services.....	28

GENERAL INFORMATION

Jefferson County Health Department (JCHD) operates two health centers. The main office is located at 405 Main Street, P.O. Box 437, Hillsboro, MO 63050. The local telephone number is (636) 789-3372, and a toll free number for northern Jefferson County and the St. Louis area is also available at (636) 797-3737. The main fax number is (636) 797-4631, and Environmental Service's fax number is (636) 789-9030. JCHD's website address is www.jeffcohealth.org.

The branch office is located at 1818 Lonedell Road, Arnold, MO 63010. The local telephone number is (636) 282-1010. The fax number is (636) 282-2525.

Both offices are open from 8:00 a.m. to 5:30 p.m. Monday through Thursday. Although staff members work on Fridays attending meetings, events and responding to problems and/or complaints, the offices are closed to the public on Fridays. The JCHD emergency contact number, available whenever the offices are closed, is 636-262-5268. Services are provided on a nondiscriminatory basis. JCHD is an equal opportunity employer. The Health Department is an official voter registration site. Certified copies of birth and death certificates may be immediately obtained upon request at the Hillsboro and Arnold locations. Birth records are \$15.00 each; the first death record requested is \$13.00, additional copies of the same record are \$10.00 each. There may be an additional fee if records are mailed. Statistics for 2008 are as follows:

Births recorded.....	643
Deaths recorded.....	1225
Fetal deaths recorded.....	5
Certified copies issued.....	20,042

Notable accomplishments during 2008 include:

- JCHD continued to deal with decreasing federal and state Public Health funding streams during 2008. Staff reductions taken through 2007 resulted in difficulty scheduling adequate staff for the weekly 42.5 hour office schedule at both locations. Available options were to close an office, which would cause a significant travel barrier to many residents; or to reduce the office schedule. The JCHD Board implemented a Monday through Thursday weekly schedule on a trial basis in May. Following program evaluation and a customer satisfaction survey, the four day schedule became permanent in August.
- JCHD continued to provide support and assistance to agencies involved in the Herculaneum lead clean-up project. Stricter National Ambient Air Quality Standards were passed which will be more difficult to meet. EPA continued a survey of potentially high risk properties in Jefferson County for elevated levels of lead in soil and water, named the "Southwest Jefferson County Mining Site" project. The EPA sampled soil from 1,011 properties; 211 were over 1,200 PPM lead; 137 were between 400-1,199 PPM. It was discovered that haulers providing soil for fill and/or landscaping were spreading lead contaminated soil. Yard soils are scheduled for replacement. 517 wells were sampled; 39 exceeded the

- threshold for lead and two for cadmium. All of those households were provided bottled water. Two Public Information sessions were held in DeSoto.
- JCHD responded to two rounds of flooding during the spring and early summer.
 - One new Board member, Mr. Ernie Howell, was appointed to the Board in April.
 - The mobile school based dental program continued to operate on a self-supporting basis following the expiration of its Missouri Foundation for Health grant. A “Give Kids A Smile” event was held on April 19.
 - Air conditioners were distributed again this summer to at-risk residents at no charge as part of the Ameren “Be Cool” program.
 - Nursing Director Linda Warden, a long-time JCHD employee, retired in July.
 - Extensive Emergency Preparedness activities were accomplished throughout the year, including development of a special needs shelter plan, an anti-viral distribution and pandemic influenza plan and an earthquake preparedness plan; successfully completed an exercise on March 18 and held two “drive-through” influenza clinics; and obtained a satellite telephone to enhance communications in an emergency.
 - JCHD continued to collaborate with the Jefferson County Sheriff’s Office and several other agencies to implement a COPS Methamphetamine grant which provides methamphetamine testing capability, treatment options, retailer education and raises community awareness of the methamphetamine issue.
 - Environmental Supervisor was named “Sanitarian Of The Year” by the Missouri Environmental Health Association.
 - Jefferson County voters adopted Charter Government in the November elections. This change may not have a significant impact for some time since JCHD is not part of County Government.
 - JCHD developed a program called the Public Health Academy held one night a week for six weeks to educate citizens on what Public Health does and why. The first session was held in September and October and subsequent sessions are being planned.
 - Two significant outbreaks occurred during the year: a metropolitan area wide outbreak of pertussis; and a nationwide salmonella outbreak originally thought to be caused by tomatoes, but peppers and other produce items may have been involved. JCHD worked closely with an EPI team from CDC to investigate local cases. Another salmonella outbreak at the end of the year was traced to peanut products.
 - JCHD obtained two new grants this year from the Missouri Foundation for Health. One is a capacity building grant which provides funding for assistance to complete a community health assessment and a strategic plan. The other is called Plant, Eat and Play, which provides funding to continue collaborative activities with Get Healthy DeSoto to improve the community’s lifestyle choices including better nutrition and physical activity levels.

Following the 2008 budget, the table of organization and a discussion of Public Health is a summary of other selected services provided by the Jefferson County Health Department during 2008.

**JEFFERSON COUNTY HEALTH DEPARTMENT
BUDGET FOR CALENDER YEAR 2008**

	Budget
REVENUE & CARRYOVER:	
LOCAL TAXES	\$1,837,024.00
FINANCIAL INSTITUTION TAX	\$2,400.00
SUR TAX	\$16,000.00
DEPARTMENT OF HEALTH	
BIOTERRORISM PLANNER/EPI SPECIALIST	\$177,455.00
CHEST CLINIC	\$2,500.00
CHILD CARE FACILITIES	\$12,000.00
CHRONIC DISEASE	\$35,000.00
CORE PUBLIC HEALTH FUNCTIONS	\$149,649.00
CRI GRANT/ADMIN. OVERHEAD FEE	\$36,272.00
HEAD INJURY SERVICE COORDINATION	\$97,350.00
MATERNAL & CHILD HEALTH	\$59,737.00
PANDEMIC FLU/PHASE II	\$28,908.00
SCHOOL HEALTH	\$0.00
SHOW ME HEALTHY WOMEN/WISE WOMEN	\$21,000.00
SPECIAL HEALTH CARE NEEDS COORDINATOR	\$107,000.00
WEST NILE VIRUS MOSQUITO SURVEILLANCE	\$3,700.00
METH GRANT	\$10,000.00
MISCELLANEOUS	\$500.00
DEPARTMENT OF CORRECTIONS	\$200.00
SEXUALLY ORIENTED BUSINESS/COUNTY OF JEFFERSON	\$9,000.00
VECTOR CONTROL/COUNTY OF JEFFERSON	\$25,000.00
SUNRISE SCHOOL REIMBURSEMENT	\$30,704.00
MO FAMILY HEALTH COUNCIL/FAMILY PLANNING	\$131,300.00
IMPROVED CERVICAL CANCER SCREENINGS	\$0.00
MO FOUNDATION FOR HEALTH	
DENTAL GRANT	\$126,231.00
GET HEALTHY DESOTO GRANT	\$77,477.00
TOBACCO GRANT	\$10,940.00
INTEREST	\$24,000.00
FEE COLLECTION	
FAMILY PLANNING/STD FEES	\$125,000.00
FOOD EDUCATION/PERMITS/PLAN REVIEWS/OTHER	\$146,000.00
GARDISIL ADM FEE	\$6,000.00
IMMUNIZATION FEES	\$55,000.00
LAB FEES/WELLNESS	\$8,300.00
REGISTRAR	\$250,000.00
TUBERCULIN TEST FEE	\$14,000.00
WATER TESTING	\$54,000.00
WNV/CITIES	\$10,000.00
MEDICAID	\$150,000.00
MEDICARE	\$60,000.00
VEHICLE USAGE REIMBURSEMENT	\$9,000.00
DONATIONS	\$1,500.00
MISCELLANEOUS	\$32,000.00

ESTIMATED CARRYOVER	\$87,000.00
TOTAL	\$4,039,147.00
EXPENDITURES:	
SALARIES	\$2,273,323.00
FRINGE	\$791,328.00
MILEAGE RIEMB	\$23,000.00
FUEL COST	\$40,000.00
TRAINING/MEETINGS	
AIRLINE/SHUTTLE/CAB EXPENSES	\$2,000.00
FOOD REIMB EXPENSES	\$1,500.00
LODGING EXPENSES	\$4,000.00
REGISTRATION FEE EXPENSES	\$12,500.00
OPERATING EXPENSE	
BIO HAZARD PICKUP	\$4,000.00
DUMPSTER	\$2,500.00
SHREDDING SERVICE	\$1,440.00
BOARD	\$1,000.00
EQUIPMENT MAINTENANCE	\$25,000.00
GENERAL MAINTENANCE	\$10,000.00
VEHICLE MAINTENANCE	\$13,000.00
ELECTRIC	\$20,000.00
HEATING FUEL	\$11,000.00
WATER/SEWER	\$1,500.00
MORTGAGE PAYMENT	\$65,635.00
ADVERTISING EXPENSE	\$7,000.00
BOOKS/SUBSCRIPTIONS/REFERENCES	\$300.00
POSTAGE	\$20,000.00
PRINTING/COPY	\$6,000.00
CELL PHONES	\$12,000.00
OFFICE TELEPHONE	\$30,000.00
PAGERS	\$885.00
INSURANCE	
BLDG/LIAB/E&O	\$17,000.00
BOND	\$750.00
VEHICLE INSURANCE	\$18,000.00
UNEMPLOYEMENT	\$3,000.00
WORKERS' COMP	\$31,200.00
SUPPLIES	
OFFICE SUPPLIES	\$25,000.00
PROGRAM	

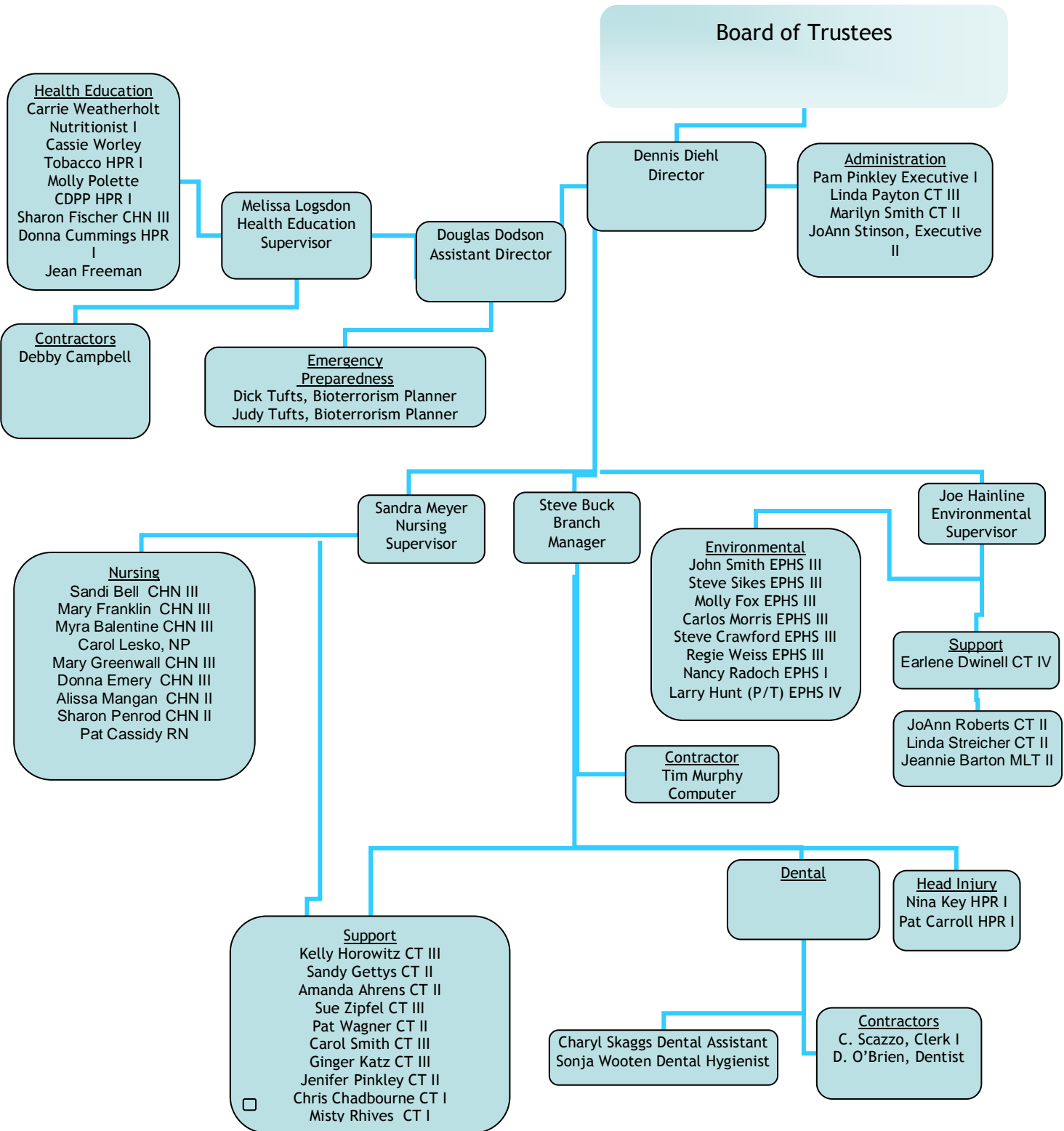
CUSTODIAL	\$4,000.00
ENVIRONMENTAL SUPPLIES	\$40,000.00
FAMILY PLANNING	\$75,000.00
FOOD PROGRAM	\$8,700.00
NURSE	\$125,000.00
OTHER PROGRAM EXPENSES	\$53,300.00
PROMOTIONAL ITEMS	\$1,000.00
SEXUALLY ORIENTED BUSINESS	\$9,000.00
VECTOR CONTROL PROGRAM	\$35,000.00
VITAL RECORDS PROGRAM	\$20,000.00
EQUIP/FURNITURE	\$0.00
COMPUTER EQUIP	\$0.00
CONTRACTUAL	
AUDIT	\$11,500.00
LEGAL	\$16,000.00
MEDICAL	\$44,000.00
ELECTION	\$80,000.00
CONTINGENCY	\$41,786.00
MISCELLANEOUS	\$1,000.00
TOTAL	\$4,039,147.00

JEFFERSON COUNTY HEALTH DEPARTMENT

BOARD OF TRUSTEES (as of December 31, 2008)

President: Mr. Paul Wieland
Members: Mr. Tim Pigg
Mrs. Elizabeth McCarthy
Mrs. Geraldine McKee, R.N.
Mr. Ernie Howell
Secretary to the Board: Mrs. Pamela Pinkley

Organizational Chart: Jefferson County Health Department – December 2008



What Does Jefferson County Health Department Do in Our Community?

Missouri's 114 local public health agencies (LPHA) are mandated to provide essential disease prevention programs and services in every city and county, to prevent disease, promote health and protect the public. These programs reduce the fiscal burden on Medicaid, hospitals and health plans. State and Federal funding that flows through DHSS has been frozen or cut during the Bush/Blunt administrations.

State funding for local public health services (\$8 million in FY09) has not increased since FY 00, and was actually cut in FY 03 and again in FY 04. In the last ten years, the population has increased 7%, while budget cuts and inflation have eaten away over 20% of the value of the state funds.

Missouri ranks 47th in the nation in state per capita public health funding, and we are the lowest among our contiguous states. Local funding sources are also shrinking in the present economic hard times. The number of local staff has actually decreased, while the number of residents, tourists, food facilities, sewage systems, etc. has grown. The ability of local agencies to provide essential public health services has been severely compromised.

JCHD, as do all Local Public Health Agencies, provides basic public health services:

- prevent and control communicable diseases by finding, testing and treating those who have been exposed
- prevent and control chronic diseases through community health assessment, health education, collaborative leadership, and public/private partnerships
- respond to public health emergencies, be they natural, accidental or intentional (St. Louis City is ranked in the top twenty cities nationally most at risk for a terrorist attack)
- investigate and control disease outbreaks spread through food, water or personal contact
- assure the provision of immunizations for children and adults
- assure a safe, sanitary food supply by educating and training food handlers and inspecting facilities
- assure proper disposal of sewage by enforcing regulations for onsite sewage systems
- make sure our child care centers, schools, and other institutions are safe, healthy environments (by educating providers and inspecting institutions).

Strong evidence shows that well-designed disease prevention programs, administered by public health agencies and implemented at the community level, can reduce both the risks of developing chronic diseases and their toll on the people who suffer from them. The cost savings of such programs can be enormous. A July 2008 report by the Trust for America's Health estimated that an investment of \$10 per person on effective disease prevention programs could save Missouri \$334 million annually in health spending within five years, a return on investment of 5.8:1.

Missourians' health has improved over the last several decades, and our life spans have increased, as a direct result of traditional public health services. Many diseases that took the lives of children and adults only 1-2 generations ago have been eliminated except for occasional outbreaks, which are contained through the efforts of public health agencies. Babies are much more likely to live through their first year of life than 50 years ago, and many fewer mothers die in childbirth.

However, new "epidemics" have begun to threaten to bankrupt the health care delivery system. Obesity among adults and children has increased drastically over the last 15 years (over 1/4 of Missouri adults are now considered obese), leading to increased risks of heart disease, diabetes, arthritis, and other costly chronic diseases. Diabetes is at an all-time high. New treatments for common cancers make it even more important for people to be screened so the

disease can be caught early. For the first time in modern America, there is real concern that our children may not live as long as we will.

Each LPHA has assessed and documented the primary health needs in their communities, but Missouri has not responded by addressing these new threats. An American Lung Association report in 2007 gave our state F grades for tobacco prevention and control efforts, and our life expectancy is ranked 36th among the states by the Centers for Disease Control and Prevention.

Missouri ranks 14th in the number of residents over 65. In addition to the chronic disease epidemic, injuries remain a significant public health problem in many parts of the state. The aging of the population is creating new public health issues, including the health effects, health care costs and nursing home placements caused by falls among seniors. There are well-documented community-level programs that can reduce the rate of falls, but it takes funds to implement them. (Parts of this section were taken from the 2008 MoALPHA Public Health White Paper).

If you spend time reading this report, you will have a much better idea of what the Jefferson County Health Department does. JCHD

- ***Protects you from health threats, the everyday and the exceptional.*** JCHD guards multiple fronts to defend you from any health threat, regardless of the source, and works tirelessly to prevent disease outbreaks. JCHD makes sure the tap water you drink, the restaurant food you eat and the air you breathe are all safe. It's ready to respond to any health emergency—be it bioterrorism, severe weather, Pandemic Influenza or an environmental hazard.
- ***Educates you and your neighbors about health issues.*** JCHD gives you information that allows you to make healthy decisions every day, like exercising more, eating right, quitting smoking or simply washing your hands to keep from spreading illness. They provide this information through public forums in your community, public service announcements in the media, programs in schools, health education in homes and clinics, and detailed Web sites. During a public health emergency, JCHD provides important alerts and warnings to protect your health.
- ***Provides healthy solutions for everyone.*** JCHD offers the preventive steps you can take to avoid chronic disease and to help maintain your health. It provides flu shots for at risk individuals; other adult immunizations including Zostavax and Gardasil, and provides other screenings such as mammograms. JCHD also helps provide children with immunizations and good nutrition to help them grow and learn.
- ***Advances community health.*** JCHD plays a vital role in developing new policies and standards that address existing and emerging challenges to our community's health while enforcing a range of laws intended to keep you safe. JCHD is constantly working—through research and rigorous staff training—to maintain its unique expertise and deliver up-to-date, cutting-edge health programs.

In a sense, all of us are part of the public health system. First, we should take responsibility for our own health and safety and that of our families. That means we need to learn about health and then make informed choices about tobacco, alcohol and other substance use; nutrition and physical activity. We should see the appropriate provider regularly for prevention and treatment. And finally, we should care about and get involved in health policy issues in our community. For example, everyone should have access to means for physical activity and a safe and clean environment. The more community involvement there is, the healthier the people are, which is the goal we all want to achieve.

The activities of the Jefferson County Health Department are guided by its strategic plan. The strategic plan was developed to achieve Jefferson County Health Department's

VISION:

The Jefferson County Health Department will collaborate with community stakeholders to provide an environment that facilitates the promotion of well-being and safety for all.

Our vision will be accomplished by carrying out our

MISSION:

We will focus resources and attention on significant health issues facing all residents of Jefferson County. We will assess, plan and develop policies to identify and ensure delivery of needed services.

Our activities will be conducted according to our

VALUES:

We believe that the promotion of public health and safety is essential to the quality of life for all residents. Our values include:

- Collaboration and Partnership
- Ethical Behavior
- Work Force Development
- Disease Prevention and Health Promotion
- Cultural Diversity and Inclusivity
- Quality Standards of Customer Service
- Community Participation
- Science Based Health Practices
- An Informed and Educated Public Health Consumer

NURSING SERVICES:

CLINIC SERVICES:

- **Communicable Disease Control:**

Screening, treatment, preventive services and referrals are provided for diseases including tuberculosis, sexually transmitted diseases and other communicable diseases. Investigations are conducted and appropriate intervention measures taken in the event of disease outbreaks. Confidential HIV testing, education and counseling is provided. (*Diseases not shown if no cases were reported.*)

Diseases and number of cases reported:

ANIMAL BITES	124
CAMPYLOBACTERIOSIS	26
CHLAMYDIA	219
CRYPTOSPORIDIOSIS	4
E. COLI SHIGA TOXIN POSITIVE	1
EHRlichiosis CHAFFEENSIS	6
EHRlichiosis ANAPLASMOSIS	1
GIARDIASIS	5
GONORRHEA	34
HAEMOPHILUS INFLUENZAE, INVASIVE	1
HEPATITIS A ACUTE	3
HEPATITIS B (PREGNANCY) PRENATAL	2
HEPATITIS B ACUTE	0
HEPATITIS B CHRONIC INFECTION	32
HEPATITIS C, CHRONIC INFECTION	162
INFLUENZA (TYPE A)	57
INFLUENZA (TYPE B)	50
INFLUENZA (UNK TYPE)	46
LEGIONELLOSIS	5
LYME	1
MENINGOCOCCAL DISEASE	2
MUMPS	1
PERTUSSIS	76
Q FEVER	1
RABIES POST EXPOSURE PROPHYLAXIS	6
ROCKY MOUNTAIN SPOTTED FEVER	14
SALMONELLOSIS	38
SHIGELLOSIS	15
STREP DISEASE, GROUP A INVASIVE	3
STREP PNEUMONIAE, <5 YEARS, INVASIVE	2
STREP PNEUMONIAE, DRUG-RESISTANT	3
SYPHILLIS	1
VARICELLA (CHICKENPOX)	42

Tuberculosis clinic visits.....	46
Tuberculosis non-clinic visits.....	469

	Community	Hillsboro	Arnold
HIV tests.....	172	506	621
HIV results/counseling.....	162	31	42
STD Clinic.....		76	96
STD Walk-ins.....		97	125

- **Family Planning Services:**

Contraceptive counseling and services are available for persons who wish to plan the timing and number of children. JCHD operates one of the largest public family planning programs in Missouri.

	Hillsboro	Arnold
Client visits to Practitioner.....	944	1030
Non-clinician visits for medical services.....	817	1113

- **Lead Testing & Follow-up Program:**

Children less than 72 months of age are at greatest risk for lead poisoning and are the primary focus for blood lead testing. Nursing staff provide lead testing for walk-in clients and schedule on-site screenings for high risk clients. JCHD collaborates with WIC and Head Start to ensure that lead screenings are offered to as many children less than six years of age as possible. Clients and families with elevated blood lead levels are provided with education, advice, appropriate referrals and follow-up until blood lead levels return to normal.

Children tested for blood lead.....	158
Children followed for elevated blood lead levels.....	36

- **Immunizations:**

Immunizations routinely recommended for children and adults are available at no charge. Other vaccines are available at a nominal fee. Immunizations are provided on a walk-in basis or with appointments during regular office hours Mondays and Wednesdays in Arnold and Tuesdays and Thursdays in the Hillsboro office. New vaccines offered this year are the Gardasil (HPV) vaccine, which is available to girls ages 9-18 through the Vaccine for Children program and for women 18-26 through a grant from the Missouri Foundation for Health, and the Zostavax (Shingles) vaccine which is available for senior citizens on a self-pay basis.

	Hillsboro	Arnold
Diphtheria-Tetanus-Acellular Pertussis.....	413	332
Diphtheria-Tetanus-Acellular Pertussis/Hep. B/IPV.....	116	80
Gardasil.....	424	454
Haemophilus Influenza Type B (HIB).....	179	118
Pentacel.....	0	0
Kinrix.....	0	0
Hepatitis A.....	701	581
Hepatitis B	354	217
Hepatitis B and HIB.....	15	29
Inactivated Polio.....	328	276
Measles-Mumps-Rubella (MMR).....	364	303
Measles-Mumps-Rubella-Varicella (MMRV).....	0	2
Meningococcal.....	59	117
Pneumococcal Conjugate (PCV7-Prevnar).....	24	197
Pneumonia.....	266	11
Rabies.....	12	6
Rotateq.....	86	57
Tdap.....	534	544
Tetanus Diphtheria (Adult).....	129	100
Twinrix (Hep. A & Hep. B).....	64	62
Varicella.....	452	691
Influenza.....	1541	1290

- **Walk-In Clinic:**

The health center offers walk-in services Mondays and Wednesdays in the Arnold office and Tuesdays and Thursdays in the Hillsboro office, which include blood pressure testing, TB testing and medication pick-up, and contraceptive supplies. Pregnancy testing, hemoglobins (iron levels), lead testing, blood testing and other lab work are available by appointment.

Blood pressures.....	261
TB tests administered	1120
TB tests read.....	1022
Diabetic/Cholesterol screenings.....	133
PSA screenings.....	18
Colorectal screenings.....	6
Other services (hemoglobins, serology, injections, etc.).....	430

- **Pregnancy Testing:**

Pregnancy testing, counseling and referral services are provided.

	Hillsboro	Arnold
Pregnancy tests administered.....	605	483

- **Temporary Medicaid Cards:**
Patients who have a positive pregnancy test may complete a form for a temporary Medicaid card, and receive counseling and referral services.

Number of temporary Medicaid cards issued.....	537
Number of risk appraisals completed.....	528

- **Women’s Health**
Show Me Healthy Women..... 141
Wise Women..... 84
Lifestyle Education Sessions..... 164

COMMUNITY HEALTH SERVICES:

Prevention of disease is the core mission of public health, and the prevention of chronic disease presents particularly unique and difficult challenges. JCHD has assembled a highly qualified team of health education specialists to respond to the needs of Jefferson County’s residents. The members of the Health Education team provided services to over 50,000 Jefferson County residents in 2008. JCHD’s health educators promote health and prevent disease, disability and premature death in Jefferson County through various behavior change activities. The health education team presents educational programs for schools, worksites and community organizations, facilitates worksite wellness programs, provides health screenings, assists with policy development, conducts community assessments, and coordinates community coalitions.

The Health Education team presented 940 classes to 46,000 youth and adults in Jefferson County. Health educators facilitated classes on a variety of topics including nutrition, methamphetamine, sexually transmitted infections, sun safety, dental health, cancer prevention, and tobacco cessation. Other health education highlights are noted in detail under the specific program topics in the following sections.

- **Get Healthy and Active DeSoto:**
JCHD and Get Healthy DeSoto received funding from the Missouri Foundation for Health to increase physical activity and improve nutrition in DeSoto. Using funds from this grant, JCHD provided physical activity and nutrition education to third graders and staff members at Vineland Elementary, Athena Elementary, Sunrise and St. Rose of Lima. JCHD staff members were trained to present "Sneakers", a four-week physical activity and education program, and "Funtastic Nutrition", a six-week healthy eating program from BJC Healthcare Youth Outreach and Development. Staff members at each school received weekly LEARN (Lifestyle, Exercise, Attitude, Relationships, and Nutrition) e-mails that promoted physical activity and healthy eating and educational presentations on the importance of

physical activity and healthy eating. Get Healthy DeSoto distributed weekly newsletters to residents living in the 63020 zip code and organized various wellness events including a Better Body Challenge, golf tournament, and walking clubs.

In December 2008, JCHD and Get Healthy DeSoto (GHD) received additional funding from the Missouri Foundation for Health to increase access to fresh produce, increase physical activity and improve nutrition in DeSoto's restaurants. JCHD and GHD will work with the DeSoto School District and Loving Care Nursing Home to develop two community gardens. Ten percent of the produce from the gardens will be donated to a local food pantry. JCHD and GHD will work with local restaurants to designate "healthy" menu items and develop new healthy menu items. Finally, JCHD and GHD will use grant money to make enhancements to the walking trail at one local park.

- **Methamphetamine Action Coalition (MAC):**

MAC was formed in 2006 to address the problems associated with methamphetamine in Jefferson County. The coalition's mission is to lower the rates of methamphetamine use in Jefferson County through education, awareness, and community collaboration. For the past three years, the Jefferson County Health Department (JCHD) has taken a lead role in organizing the MAC, embodying JCHD's mission of focusing resources and attention on critical health issues facing the citizens of Jefferson County. Currently, there are over 17 local agencies represented at MAC on a monthly basis. In 2008, JCHD hired a full-time health educator to coordinate the COPS program, a multi-faceted methamphetamine program funded by the Department of Justice that focuses on inter-agency collaboration and retailer education.

The MAC coalition addresses the dangers of methamphetamine through the strategies of education and community-based processes. According to the Office of National Drug Control Policy, education builds critical life and social skills through structured learning processes. Critical life and social skills include decision making, peer resistance, coping with stress, problem solving, interpersonal communication, and systematic and judgmental abilities. Under the strategy of community-based processes, we partnered with many of our agencies represented at the MAC meetings to improve the community's effectiveness at prevention services regarding methamphetamine and substance abuse disorders. Community-Based Processes enhance the ability of the community to more effectively provide prevention and treatment services for alcohol, tobacco and drug abuse disorders.

Under the strategy of education, MAC facilitates an evidenced-based methamphetamine prevention curriculum from Meth Free Montana throughout Jefferson County for both junior high and high school aged youth. MAC targets alternative settings such as after-school programs, the YMCA, Red Ribbon rallies, faith-based organizations, and substance abuse treatment programs for the Meth Basics presentations. Under the Missouri Strategic Prevention Framework Steering Grant, JCHD and MAC have facilitated these presentations in Jefferson County for the past year and a half and have demonstrated significant outcomes including an average knowledge increase of 6.4% among students.

MAC has collaborated with Jefferson County P.R.I.D.E. to sponsor Teen Advisory Board (TAB) meetings and a teen Baseline training conducted by the National Council on Alcoholism & Drug Abuse. These members helped MAC develop youth-focused outreach materials, recruit additional youth, implement technology to recruit additional youth, and restructure the TAB membership process. We also actively participate in Jefferson County P.R.I.D.E. by attending the P.R.I.D.E. meetings, assisting with presentation of Meth360 and recruiting of Meth360 training sites, and participating in their Media Taskforce sub-committee.

In the last fiscal year MAC reached 2062 individuals. MAC reached these individuals through various activities: monthly meetings and distributing information at 28 health fairs, block parties, town-hall meetings, and community forums throughout Jefferson County. It also sponsored a Moms Off Methamphetamine (MOM) support group (that is facilitated by a MAC member), collected items for children removed from meth labs, worked with JCHD on identifying resources for individuals who live in former meth labs, sponsored meth forums for health care professionals, and supported the Meth Watch program, a retailer education program for Jefferson County. MAC's activities are made possible through funding provided by the Department of Mental Health, Division of Alcohol and Drug Abuse.

- **Tobacco:**

Jefferson County has the highest lung cancer rate and chronic obstructive pulmonary disease (COPD) in the state of Missouri. According to the Missouri Information for Community Assessment, smoking is the number one prioritized risk factor for Jefferson County. A 2006 Missouri County Level Study concluded that 23% of county residents smoked and the rate of death due to smoking-related illness is significantly higher (182 per 100,000) when compared to the state (157 per 100,000). The main goal of the Jefferson County Health Department Tobacco Program is to achieve a healthy, tobacco-free environment for Jefferson County. The Tobacco Program seeks to accomplish this goal by preventing tobacco use, promoting tobacco cessation and providing resources through information and education regarding the risks associated with the use of tobacco, the risks of exposure to secondhand smoke, and the benefits resulting from tobacco cessation.

Youth Tobacco Prevention Programs in 2008:

JCHD offers tobacco prevention programs for children of all ages. Presentations include Tar Wars (grades 3-5), ABCs of Tobacco (grades 6-8) and Tobacco Use and Influence (grades 9-12).

Programs presented.....	52
Students in attendance.....	2331

WIC Education:

JCHD collaborated with the county WIC clinic to provide information about tobacco use, secondhand smoke and cessation techniques to prenatal

women. JCHD provided telephone counseling, and clients attended cessation classes free of charge.

Tobacco Newsflash:

JCHD sent monthly newsletters to community and political leaders, health care providers, educators and county residents to educate and promote tobacco prevention and control measures. The newsletters feature articles and information regarding tobacco news and prevention efforts globally and in Jefferson County. The December issue of Tobacco Newsflash featured student writings and artwork. The JCHD website houses all past issues of the Newsflash and the current edition of the Newsflash.

Clean Indoor Air Law Compliance:

Tobacco education staff conducted clean indoor air compliance checks at county restaurants, and distributed educational information to all restaurants. A clean indoor air component was added to the Serv/Safe program and restaurant employees were taught how to comply with the law.

Compliance checks completed..... 27
 Serv/Safe information sessions completed.....11

Freedom From Smoking:

This seven-week course provides education and support for persons who wish to stop smoking.

Smoking cessation classes offered..... 11
 Participants completing course.....112

Smoke-Free Teens On Purpose (STOP):

JCHD offered this teen cessation program in collaboration with BJC Healthcare’s Youth Outreach and Development. The program is designed to help middle and high school age students to stop using tobacco.

Programs offered..... 1
 Participants completing course..... 5

Tobacco Cessation Line

Calls to the tobacco cessation line.39

- **Information Booths:**

Brochures and information about topics such as nutrition, physical activity, methamphetamine, tobacco use, and smoking cessation were distributed at various locations throughout the county.

Information booths..... 64

- **Influenza & Wellness:**

Services are provided at both health department locations and at centers throughout the county. Services include influenza vaccination, adult immunizations and wellness programs.

Individuals receiving flu vaccine.....	2754
Blood pressure screenings.....	375
Individuals receiving pneumonia vaccine.....	5
Diabetic/cholesterol screenings.....	141
PSA screenings.....	47
Colorectal screenings.....	38
TB tests.....	161
Other services (hemoglobins, serology, injections, etc.).....	450
Wellness consults/referrals.....	115

- **Arthritis Foundation Exercise Program:**

The Arthritis Foundation Exercise Program is a bi-weekly exercise program for clients with arthritis following Arthritis Foundation guidelines. This program promotes physical activity to relieve pain and increase activity levels and provides education about arthritis management to the participants.

Number of classes offered.....	577
Number of people attending classes.....	5082

- **Car Seat Program:**

Infant and toddler safety seats, along with information and training on proper use, are provided to families meeting WIC/Medicaid income guidelines.

Car seats distributed.....	25
----------------------------	----

- **Nutrition Education:**

JCHD’s registered and licensed dietitian provided 108 nutrition education presentations and 50 personal counseling sessions on topics such as diabetes, heart health, healthy eating and weight loss for the residents of Jefferson County.

- **Chronic Disease Prevention Program:**

In order to combat chronic disease in Jefferson County, multiple approaches are taken: program facilitation, resource allocation, and health education. Programs range from arthritis prevention exercise for adults to nutrition education for elementary schools. Resources such as informational pamphlets and other literature, knowledge of qualified staff, and equipment (e.g. pedometers) are made available to residents of Jefferson County. Chronic disease prevention was also aided through cooperation with community-based organizations and coalitions

that provide residents with opportunities for physical activity, healthy eating, and learning.

- **Child Fatality Review Panel:**

Several JCHD staff members participate on the Jefferson County Child Fatality Review Panel, which meets on a monthly basis at the health department. The panel investigates the death of every individual under the age of eighteen that occurs in Jefferson County. Deaths are evaluated for the involvement of any criminal and/or negligent factors as well as identification of preventive actions to avoid future cases. Recommended follow-up activities are carried out by appropriate agencies. Members of the panel in addition to JCHD include the Prosecuting Attorney, the Medical Examiner's Office, DFS, Juvenile Services, law enforcement, ambulance services and a private physician.

- **Family Literacy Program:**

JCHD distributes new books to children who may be "at risk" for low literacy skills. Books are distributed through our immunization program as an incentive for parents to continue to receive their child's immunizations. The program promotes immunizations, literacy at an early age, and interaction between parents and children through reading activities.

- **Jefferson County Cancer Coalition:**

The Jefferson County Cancer Coalition continues to work to eradicate cancer through education, awareness, advocacy and services. This year the coalition again sponsored 4 mammography screening events collaborating with Siteman Cancer Center and Missouri Baptist Hospital where 124 women received free tests. In March, there were many health fairs and educational opportunities to discuss colorectal cancer screening. In fact, there were 1195 persons who received information, 314 took fecal occult blood test kits, 19 had blood drawn for the prostate cancer antigen (PSA) test. Jefferson County Cancer Coalition provided 6 skin cancer screening events. The coalition sent 4 people to represent the group to Lobby Day in Jefferson City. They discussed the use of the anticipated tobacco funds to increase funding for the Show Me Healthy Women program and to provide materials for tobacco education for the youth. Jefferson County Cancer Coalition also distributed curriculum guides from the American Cancer Society to all public schools to help establish tobacco education programs.

- **Dental Program:**

Jefferson County Health Department's Smiles to Go Mobile Dental Clinic is pleased to report we have completed our third year of providing dental services to Medicaid eligible children and adults with developmental disabilities. The mobile clinic traveled to 30 schools in 2008, and has been to every school district in the county. The Mobile dental Clinic also visited social service agencies such as Head Start, WIC, Ponybird, Loving Care, Great Mines FQHC Outreach, and other Jefferson County Disability Resource sites to provide much needed dental services.

On average the mobile dental clinic sees approximately 55 patients a week and gives over \$14,000 of donated dental services to each site visited. Half-hour dental education presentations are completed for every 2nd and 5th grade class of the schools we visit. Dental kits, which include a toothbrush, toothpaste, floss, mirrors, and education materials are distributed to every student school wide at the schools we visited prior to the grant ending July 1 2008. Kits are only given to the children seen on the dental van and at presentations after the grants ending. 95% of all Jefferson County school nurses have completed the dental screening education module.

Our goal is to ensure knowledge of proper oral health, preventative techniques and access to dental services for low-income, uninsured and under insured children and developmentally disabled adults regardless of barriers such as lack of money, providers and transportation; inconvenient service hours; and lack of knowledge of the importance of dental care.

Number of patients seen.....	3278
Number of dental presentations.....	32
Number of participants at dental presentations.....	2240
Number of community referrals.....	200
Number of dental screenings.....	3000
Number of dental kits distributed.....	10800
Amount of donated dental services.....	\$724,509.00
Amount billed to insurance.....	\$561,595.00
Amount of donated dental kits @5.00each.....	\$54,000.00
Total amount of Donated Dental Services.....	\$778,509.00

- **Children with Special Healthcare Needs:**

JCHD contracts with the Missouri Department of Health and Senior Services to provide service coordination for children with special healthcare needs. By assisting clients identify and access necessary community and state services and supports that will enable them to function at their maximum level of independence.

- **Adult Head Injury Service Coordination:**

JCHD also has a contract with Missouri Department of Health and Senior Services to assist individuals and families affected by Traumatic Brain Injury (TBI) to identify and access necessary services and supports that will enable them to return to a productive lifestyle in their community.

BIO-TERRORISM AND PREPAREDNESS PROGRAM:

The Missouri Department of Health and Senior Services’ contract with JCHD to provide planning and preparedness for potential bio-terrorism events in Region “C” was renewed in 2008 with emphasis focused upon an all-hazards approach to preparedness. The regional Bio-Terrorism Epidemiologist responsible for Jefferson County (who continues to provide support contract services to Ste. Genevieve, Ste. Francois, Perry and Washington Counties), a Regional Bio-Terrorism Planner/Emergency Response Manager responsible to Jefferson County, and a Region C Bio-Terrorism Training Officer and Volunteer Coordinator are all headquartered at the Jefferson County Health Department with their offices being

located at the Arnold facility. The BT / ER section is responsible for training of regional health departments and the public and private sector as well as coordinating volunteer recruitment and training programs throughout Region "C". The Jefferson County Health Department Bio-Terrorism/Emergency Response Section, continues to be recognized by the Missouri Department of Health and Senior Services as a model for other agencies to follow and has continued to set standards and initiate programs that the Missouri DHSS recognize and adopt as standards through the state.

Several significant initiatives have marked our progress in 2008:

- On the Epidemiology side, working groups have continued throughout the involved counties bringing together representatives of the communities and health departments in order to advance preparedness and awareness efforts. Quarterly meetings have continued with the state and the counties communicable disease coordinators to collect and monitor data. There have been several significant epidemiological investigations initiated in response to the needs of the involved counties during the year concurrent with regular surveillance and monitoring programs that are established linking vital health information and agencies together. Continued focus on interaction with area hospitals has proven to be an invaluable too in our efforts of identification and management of illness trends. We have worked closely with the National Public Health Service and the Center for Disease Control during the year and played a role in the ultimate identification and resolution of the national tomato / jalapeno incident
- Training in emergency response continues to be provided to health department employees throughout the region, the private sector, emergency response agencies and elected officials. A number of JCHD employees are trained HAM Radio Operators at the technician level, and radio equipment is located in both the Hillsboro and Arnold offices increasing our effectiveness in communication during any emergency.
- Emergency response planning, City Readiness Initiative involvement, coordinated by the Center for Disease Control (CDC), DHSS and STARRS continues. During 2008, JCHD ER Section sponsored two exercises; the first was our involvement in the State / Region "C" mass prophylaxis exercise and the second was in conjunction with our departments flu prevention program where we ran two concurrent sites as drive thru vaccination clinics to test that modality as a potential resource in our CRI toolkit. The bio-terrorism team remains involved with STARRS (St. Louis Area Regional Response System) as working members of a number of committees including the Public Health Committee, Emergency Response Committee, Communications Committee and the oversight committee known as the STARRS Advisory Council).
- The BT Emergency Response Training and Volunteer Coordinator continued efforts to develop, review and improve standards and training requirements designed to provide consistency among the health response community with respect to knowledge and necessary response training credentials. Tier 1 of a three tier program was completed and approved during 2007.
- The ER section is involved in many county wide initiatives. We have been involved in Pandemic Flu response planning as part of the nationwide CDC

strategy. Jefferson County experienced 2 major flooding / storm related disasters in 2008 which JCHD responded to and assisted in recovery efforts. During 2008, we have had significant involvement with various Department of Homeland Security programs and we will continue these initiatives, identify additional areas of focus and continue to attend and provide applicable advanced training classes.

ENVIRONMENTAL HEALTH SERVICES:

- **Food handling establishments:**
Systematic inspections are provided of all food handling establishments that handle, prepare, serve, manufacture or store food. The inspections ensure compliance with sanitation standards and sanitary practices. These inspections are crucial to the prevention of food-borne disease outbreaks.

Food service, retail, schools and daycare inspections.....	1,476
Food service, retail, schools and daycare reinspections.....	350
Food service field visits.....	428

- **Pools:**
Swimming pools are inspected to ensure safety, chemical and bacteriological quality.

Pool inspections.....	4
-----------------------	---

- **Insect, Rodent And General Complaints:**
Environmental complaints are received, investigated and/or referred to other appropriate agencies.

Complaints received.....	211
--------------------------	-----

- **Animal Bites And Rabies Testing:**
Reports of animal bites are recorded and heads of biting or questionable animals are submitted to the state laboratory for rabies testing.

Animal bites reported.....	325
Animal heads submitted.....	60
Animals confirmed as Rabid.....	0

- **Commercial Lodging:**
Hotels and motels are inspected annually for safety and sanitation.

Lodging facilities.....	12
Lodging inspections.....	35
Lodging facility field visits.....	06

- **Public And Private Drinking Water:**

Public and private water supplies are tested for bacterial contamination. Chemical screening tests are performed on individual wells.

Public water tests performed.....	3,019
Private water tests performed.....	702
Chemical screening tests performed.....	30
Pool Samples.....	4
HPC Tests.....	88

- **Educational Classes:**

Environmental Public Health Specialists provide education to food service personnel in safe, sanitary and healthful food handling procedures.

Number of attendees (Manager’s Class).....	229
Number of attendees (Basic Class).....	1,258
Number of CD-Rom Attendees (Basic Class).....	237

- **Child Care Centers/Daycares/Group Homes/Nursing Homes:**

Number of licensed and licensed exempt childcare centers.....	60
Number of licensed daycare homes.....	22
Number of licensed group homes (institutions).....	22
Number of licensed nursing homes.....	24

- **Laboratory Special Testing:**

Soft serve ice cream and ice samples are tested for bacterial contamination.

Frozen dessert samples.....	219
Ice samples.....	633

- **West Nile Virus:**

West Nile Virus (WNV) was first identified in the United State in the New York City area during 1999. Infected birds were identified in the St. Louis metropolitan area in the fall of 2001. By the end of 2002, evidence of the virus had spread essentially throughout the continental U.S. West Nile is carried by certain species of mosquitoes which transmit the virus while feeding primarily on birds, their preferred host. However, horses and humans are incidental hosts and may also become infected. Historically, the spread of WNV in a community can be traced from identification of infected mosquitoes, then birds, then horses and finally to human cases. Most people infected with WNV have no, or possibly mild symptoms. However, it can be serious and even fatal, especially in older individuals.

As a result, establishing integrated mosquito control programs is very important. This had never been done in unincorporated areas of the county. An integrated program includes surveillance for the presence of the West Nile or other viruses in the mosquito, bird and horse populations, and for mosquito-borne disease in humans; stopping the growth of mosquito larvae; adult mosquito control; and public

information and education. Mosquito control without use of pesticides is encouraged. This can be accomplished by eliminating standing water on public and private property, by discarding old tires, containers or anything that collects water; cleaning gutters; cutting back grass and other vegetation – mosquitoes don't like direct sunlight. Landscape ponds can be treated with olive oil, or with chemicals available at lawn and garden stores. Other recommendations include not going into infested areas before 6:00 a.m., or between sunset and midnight. Wear light colored clothes with hat, long sleeves, pants and socks when possible. Use repellants as the label directs, preferably with the ingredient DEET. Do not use DEET on children under eighteen months, and apply to skin or clothes as directed.

JCHD was assisted in these activities by the Jefferson County Commission and other county Departments; municipalities with existing mosquito control programs; other metropolitan counties; and by the community. Accomplishments of the program are listed below:

Human West Nile Virus cases.....	0
(Confirmed and Unconfirmed)	
Human West Nile Virus deaths.....	0
Equine West Nile Virus cases.....	0
Equine West Nile Virus deaths.....	0
Positive West Nile Virus mosquito pools.....	5
Mosquito pools collected.....	327
Positive West Nile Virus birds tested (None tested due to lack of funds).....	0
Birds submitted for West Nile Virus testing.....	1
Birds reported.....	27
Mosquito complaints.....	53
Mosquito trap sites.....	96
Mosquito traps set.....	400
Larval sites surveyed.....	100
Larval sites treated.....	100

Equine immunizations appear to be improving survivability in the horse population. Disease Virulence appears to be stronger in human cases, in that while a smaller number of acute cases were reported in humans the death rate has actually increased.

- **Hematite:**

Westinghouse reported four instances of concentrations of radioactive material exceeding limits in unrestricted areas. Hematite conducted well installations in the burial pit areas to determine groundwater aquifer drawdown. Radiological surveys/sampling was planned in the burial pits, leach fields, natural gas pipeline and soil around the process buildings. Hematite is also planning on collecting radiological data in the rail spur area and to perform building roof repairs. Hematite submitted an Action Plan to DNR. Westinghouse still has plans to address NRC regulatory requirements concurrent with those required under EPA's CERCLA process. Westinghouse has sued previous owners and the US government for cost recovery for decommissioning. Westinghouse has entered into an agreement with the State of

Missouri to give the State of Missouri specific authority in the decommissioning of the site. NRC submitted comments to the State of Missouri opposing the consent agreement because it does not recognize NRC authority over radioactive cleanup. The U. S. District Court, Eastern District of Missouri, Eastern Division, ruled that the consent decree could not ratify the consent decree because the decree attempts to regulate the safety of a site containing nuclear contaminated, a field which is completely pre-empted by the Atomic Energy Act. The estimated date for site closure is 3/1/2012.

- **Herculaneum:**

JCHD continues to provide support and assistance to the Herculaneum Smelter Site Team. A new State Implementation Plan (SIP) was adopted and has resulted in decreased lead emissions from the smelter. EPA adopted national Ambient Air Quality Standards (NAAQS) that are ten times more stringent than the previous standards. Road lead levels continued to be monitored with the street cleaning and truck wash programs in place. A road edge remediation project was also completed this year. A study of recontamination of yard soil was initiated, with results at year’s end indicating that significant recontamination was occurring in yards closer to Doe Run. Economic conditions prompted Doe Run to reduce to a one furnace operation from a two furnace smelter operation as of November.

- **Indoor Air:**

JCHD has discontinued its Indoor Air Program in response to budget cuts. There continues to be a growing number of concerns and complaints regarding indoor air quality, however, we no longer have the ability to respond. Jefferson County and the St. Louis Metro area continues to be a non-attainment air quality area under EPA regulation. Air quality can be affected by smoke, pesticides and other chemicals used in manufacturing, cleaning and maintenance, including painting and carpet cleaning. Organisms including mold and bacteria can also affect it. Discontinuation of this program increases the exposure risk of Jefferson County citizens to increased morbidity and mortality both in the general public and in school age children.

Assessments.....	0
Complaints.....	06
Actions.....	06

- **Sexually Oriented Businesses:**

Jefferson County has approved and passed an updated version of the Sexually Oriented Business Ordinance, incorporating Jefferson County Health Department’s recommendations. All business are in compliance.

Number of businesses licensed.....	5
Background investigations.....	41
Field visits/inspections.....	10
Meetings.....	4

- **Hazardous Materials Actions:**
 - 6,000 Gal. Gasoline Spill
 - Voc Samples 14
 - Bacteria Samples 12
 - Stream Samples 5
 - Surveys 14

 - 500 Gal. Diesel Oil Spill
 - Voc Samples 27
 - Bacteria Samples 21
 - Surveys 27

- **Miscellaneous Environmental Services:**
 - Foodborne illness investigations..... 26
 - Truck/Embargo/Fires..... 14
 - Environmental lead assessments at EPS’s request..... 25
 - Environmental lead assessments based on elevated blood leads..... 3
 - Waco Landfill VOC, organic chemical & inorganic chemical samples..... 0
 - Landfill investigations 6

